

Photo 4.2.3-1
Sill Angle at Bottom of Exterior Wall of Cab Walkway



Photo 4.2.3-2
Sill Angle at Bottom of Exterior Wall of Cab Walkway

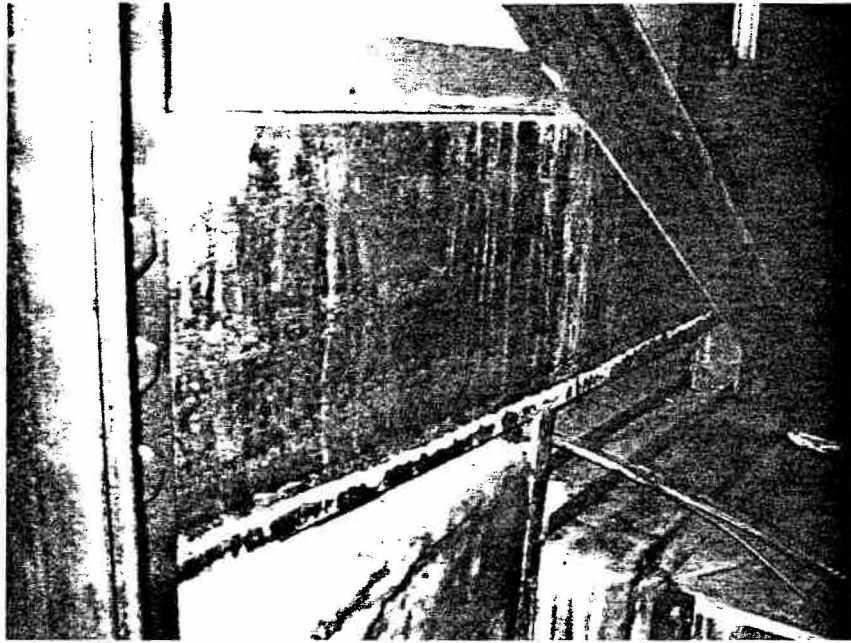


Photo 4.2.3-3
Sill Angle at Bottom of Exterior Wall of Cab Walkway

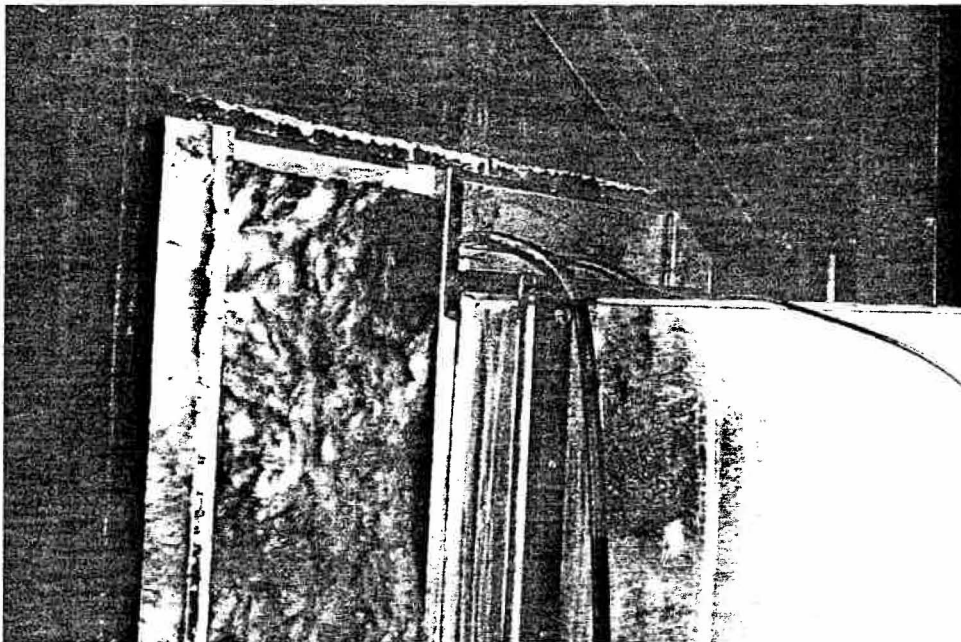


Photo 4.2.3-4
Metal Studs and Tracks Below Cab Walkway

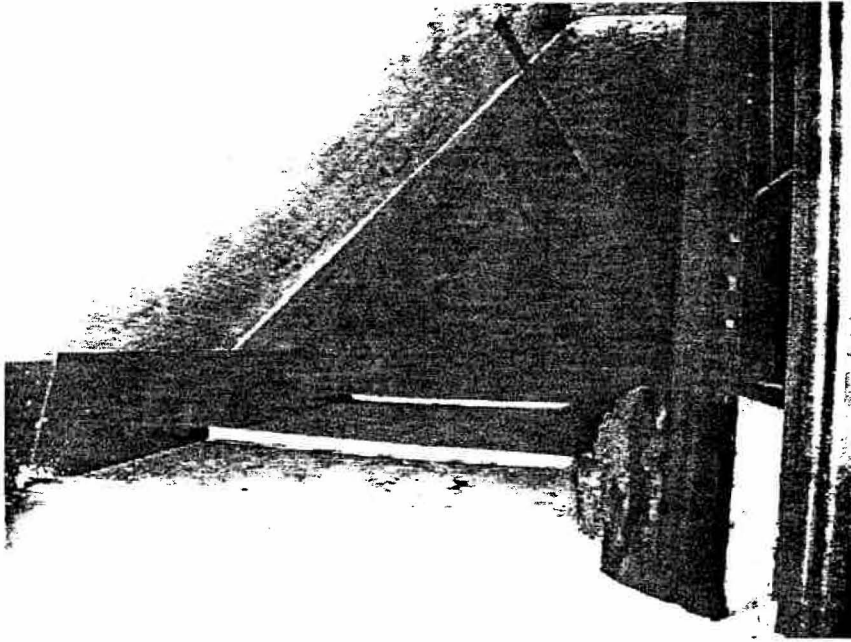


Photo 4.2.3-5
Cable Access Level Below and Outside of Cab Walkway

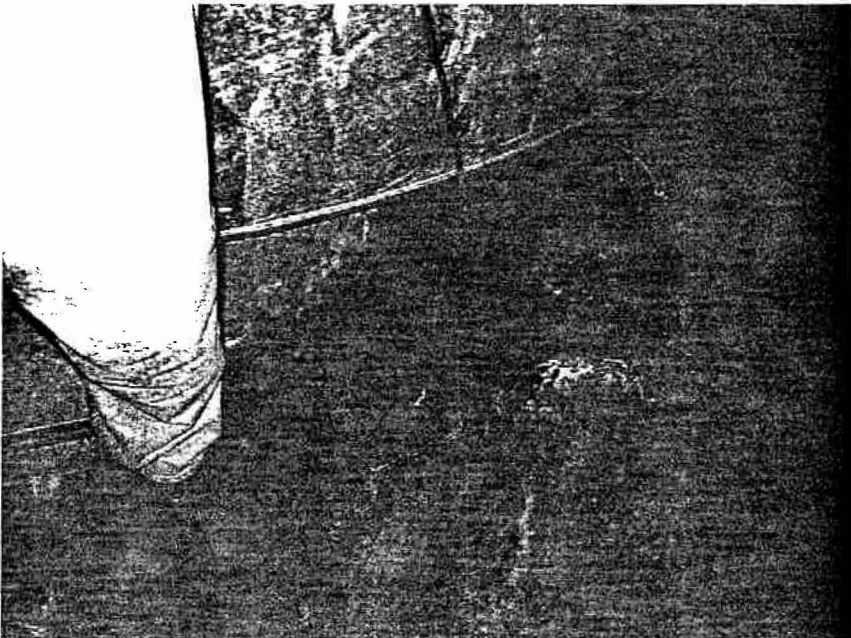


Photo 4.2.3-6
Drain at Cable Access Level Below Cab Walkway

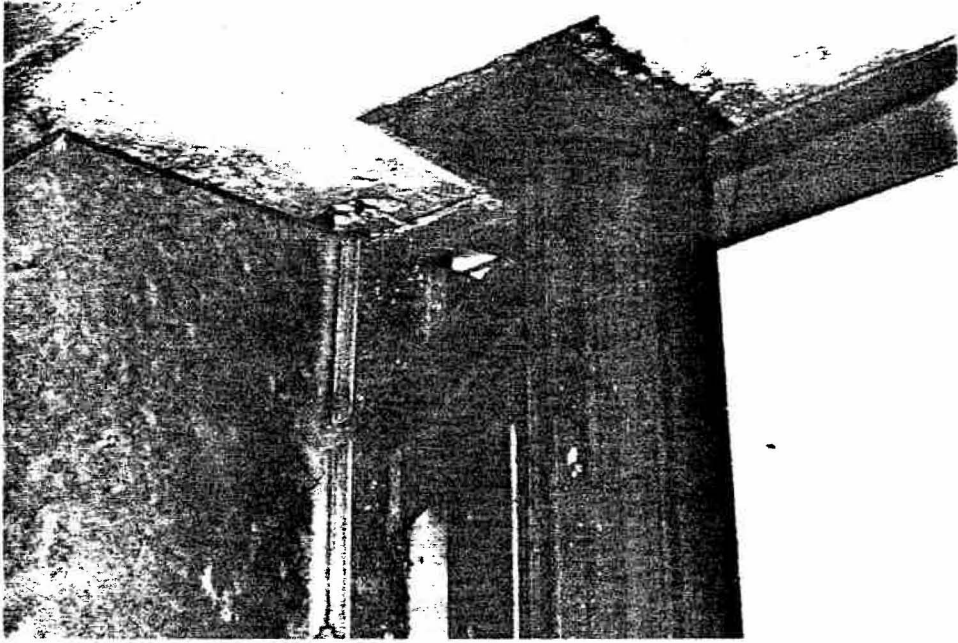


Photo 4.2.3 7
Precast Concrete Support Steel at Cable Access Level

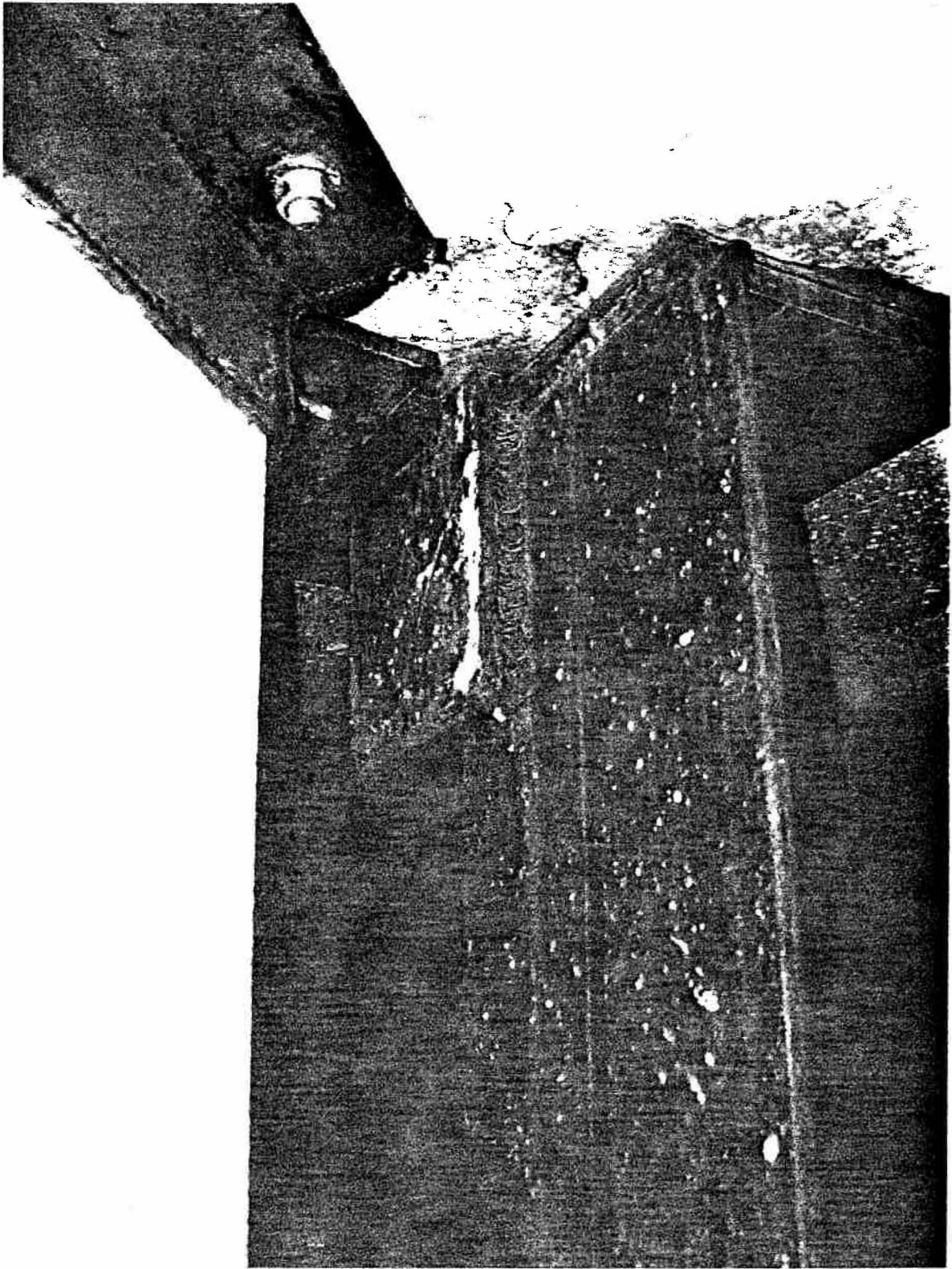


Photo 4.2.3-8
Precast Concrete Support Steel at Cable Access Level

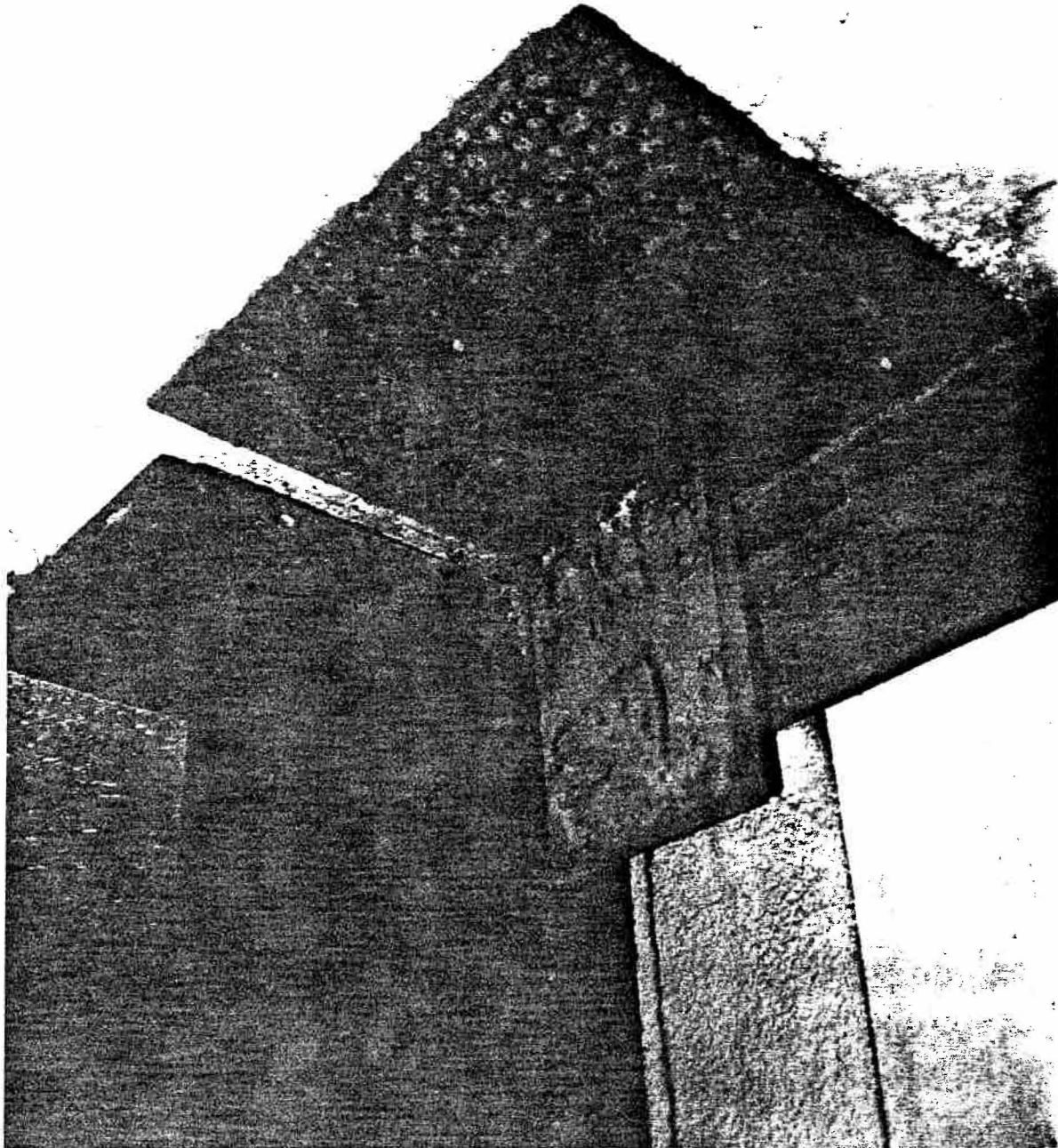


Photo 4.2.3-9
Precast Concrete Support Steel at Cable Access Level

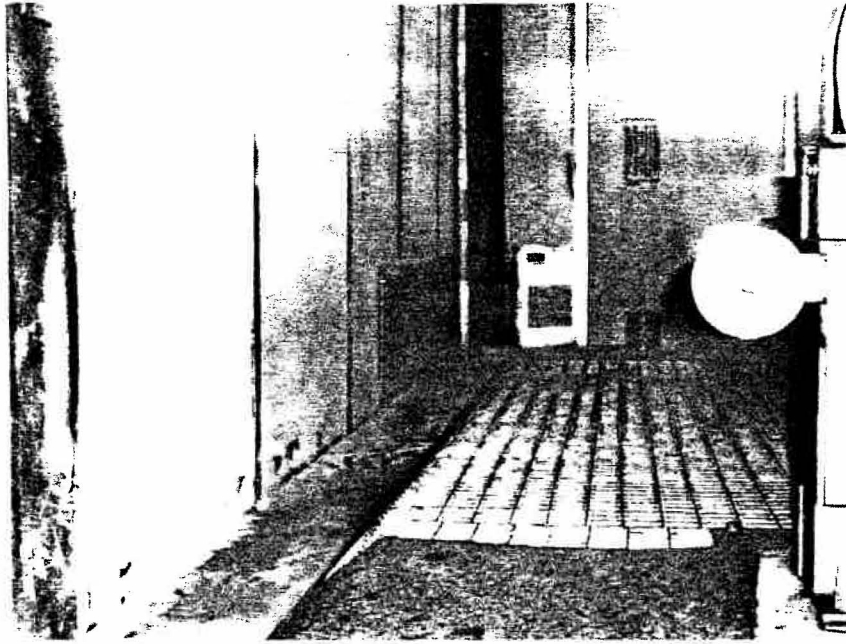


Photo 4.2.4-1
Relief Grille in Elevator Overhead

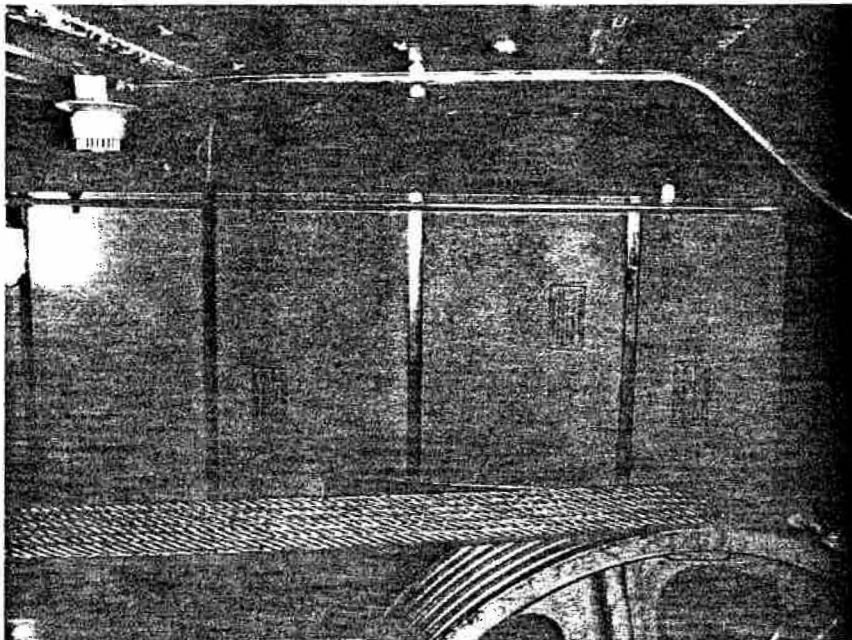


Photo 4.2.4-2
Elevator Overhead

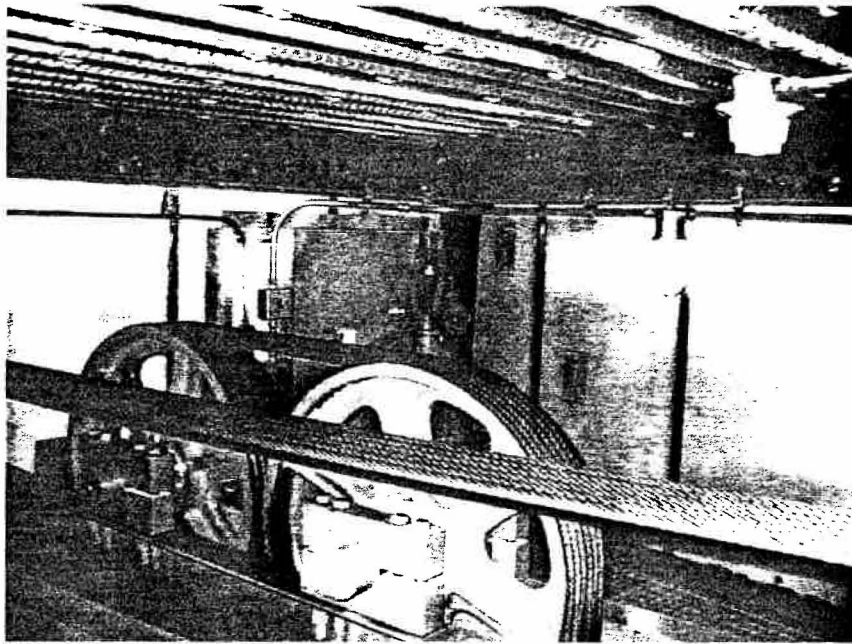


Photo 4.2.4-3
Elevator Overhead

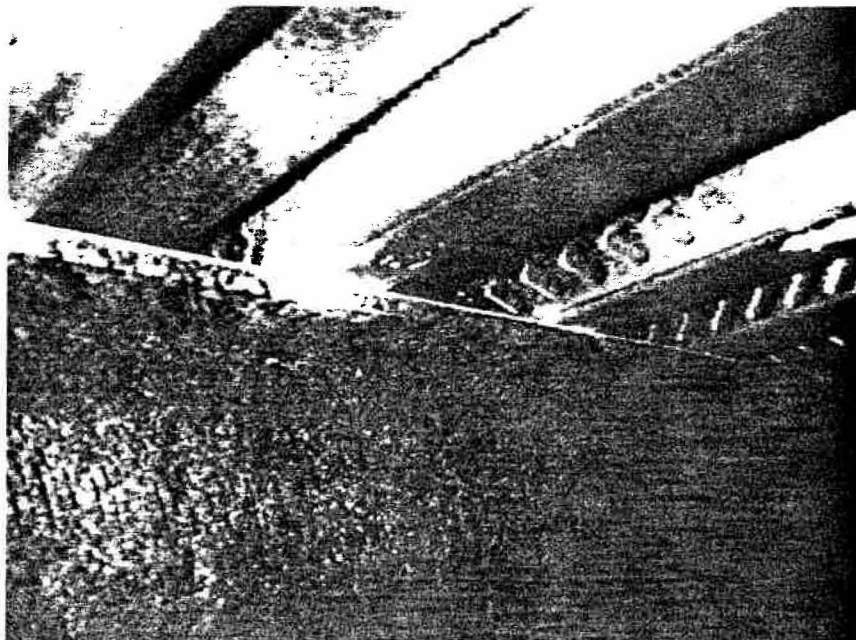


Photo 4.2.4-4
Metal deck at Support Beam in Elevator Overhead

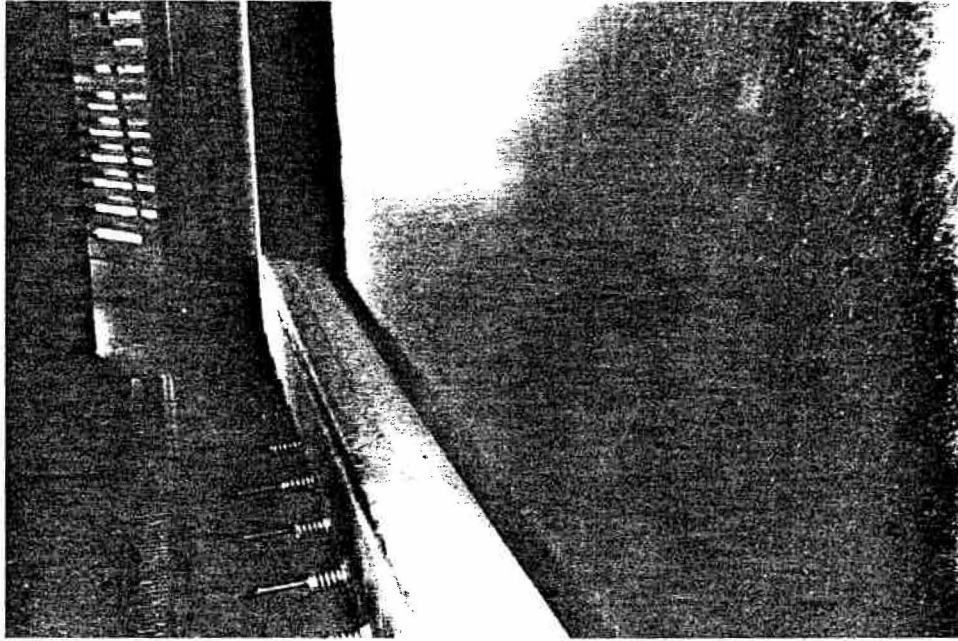


Photo 4.2.5-1
Microwave Balcony

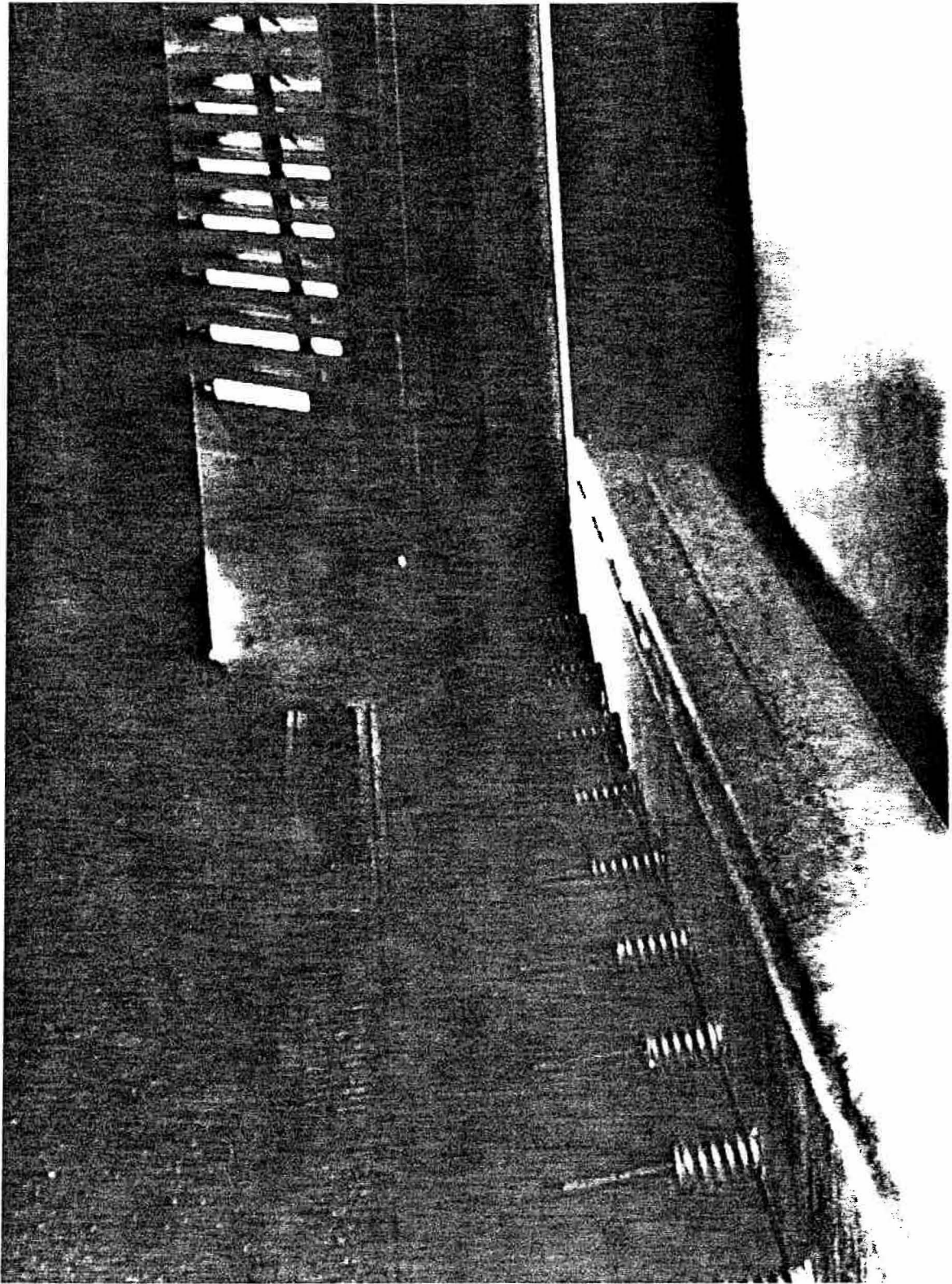


Photo 4.2.5-2
Water Marks at Hinged Louver Door at Microwave Balcony



Photo 4.2.5-3
Deteriorated Coating on Exterior Walkway at Junction Level

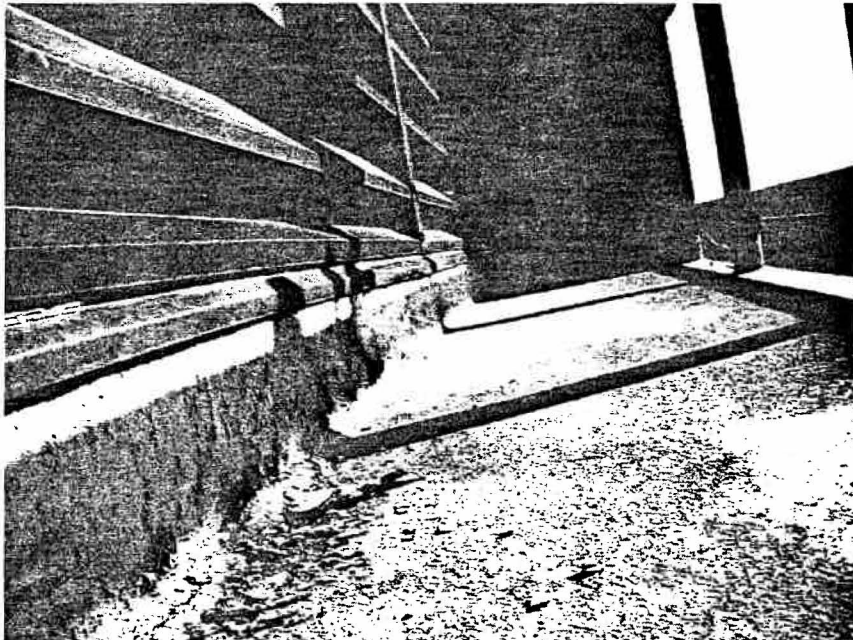


Photo 4.2.5-4
Deteriorated Coating on Exterior Walkway at Junction Level

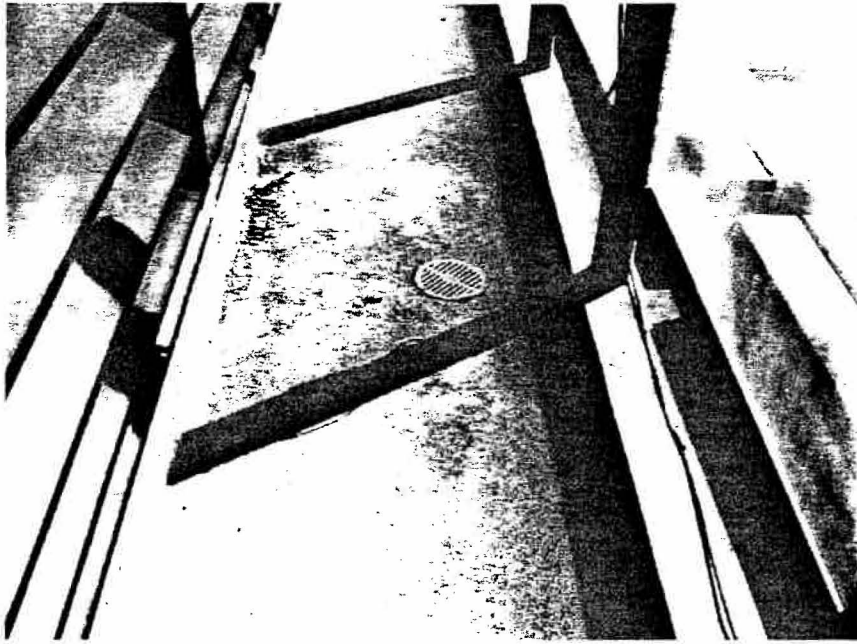


Photo 4.2.5-5
Exterior Walkway at Junction Level

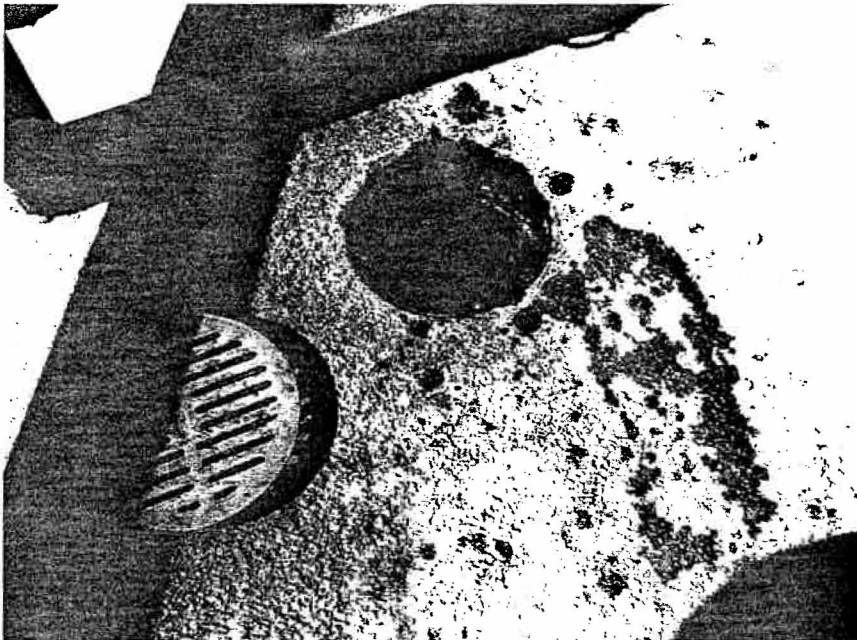


Photo 4.2.5-6
Plugged Drain - Exterior Walkway at Junction Level

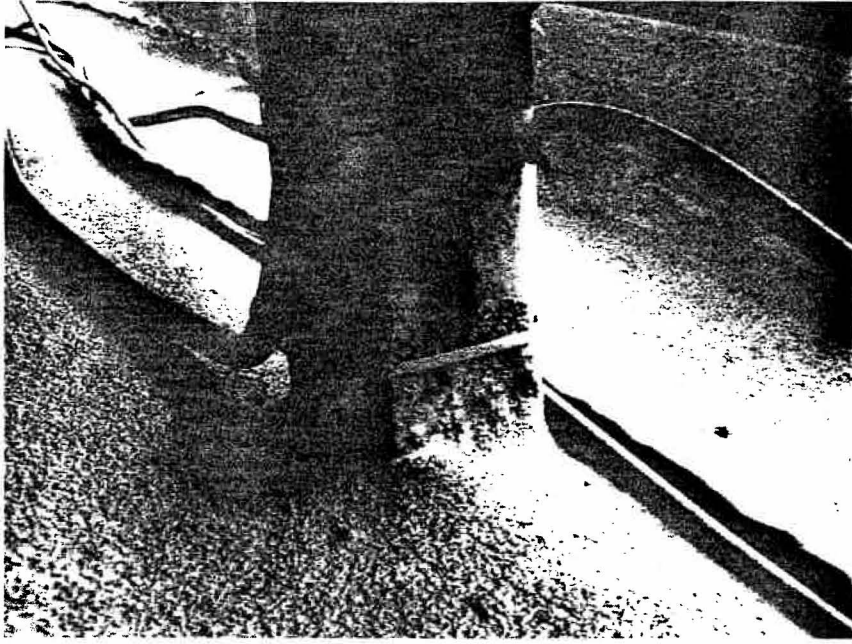


Photo 4.2.5-7
Handrail Post - Exterior Walkway at Junction Level



Photo 4.2.5-8
Handrail Post - Exterior Walkway at Junction Level

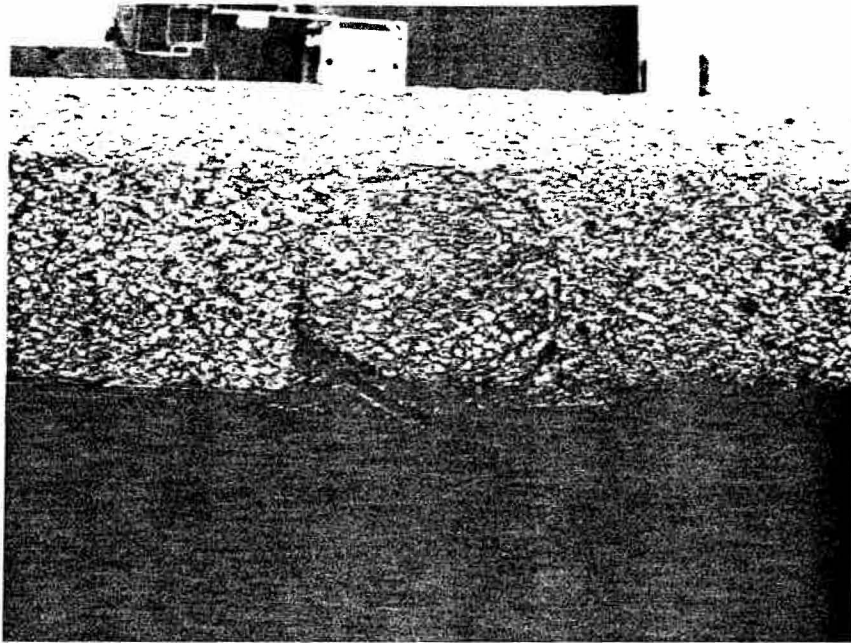


Photo 4.2.5-9
Top of Precast Panel - Exterior Walkway at Junction Level

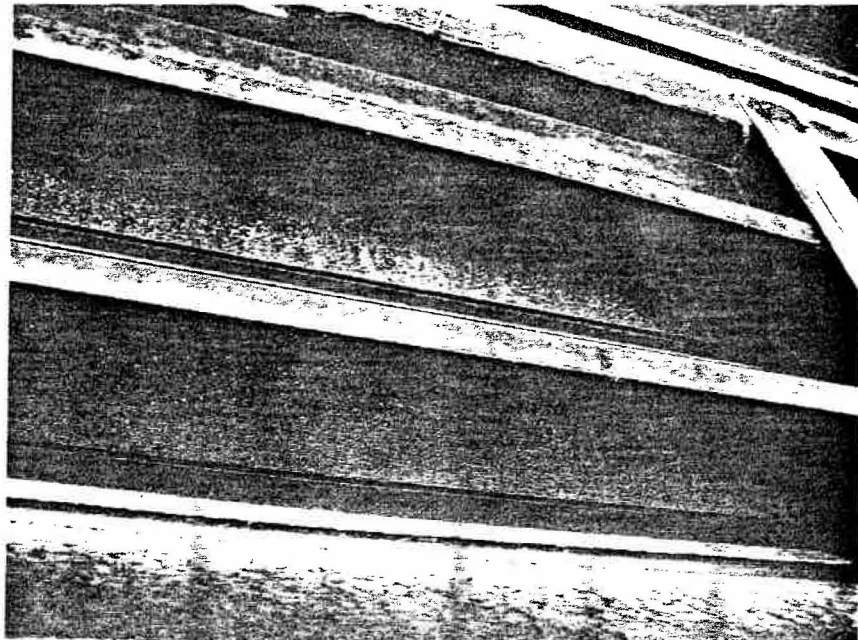


Photo 4.2.5-10
Louver - Exterior Walkway at Junction Level

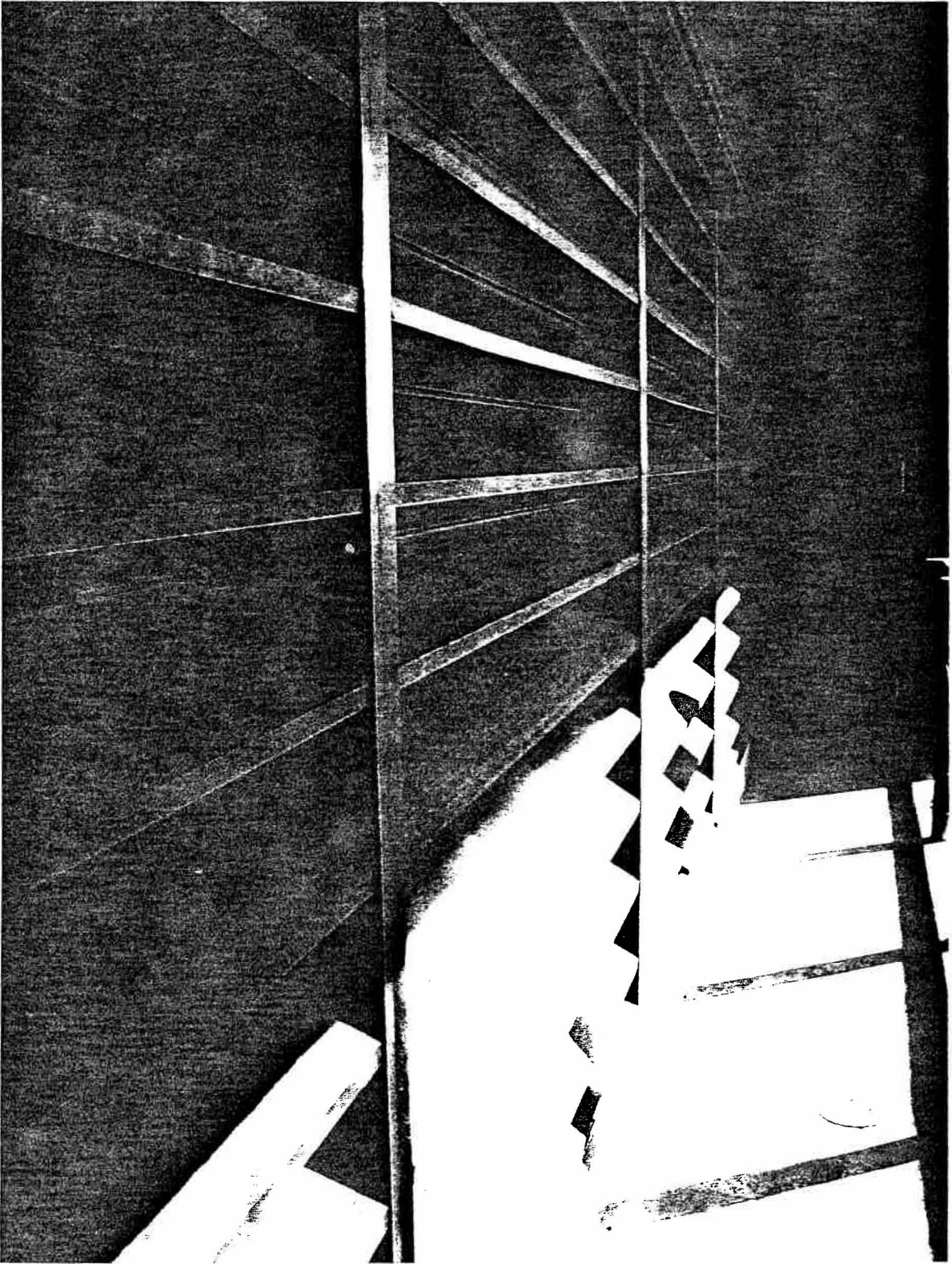


Photo 4.2.5-11
Louver - Exterior Walkway at Junction Level

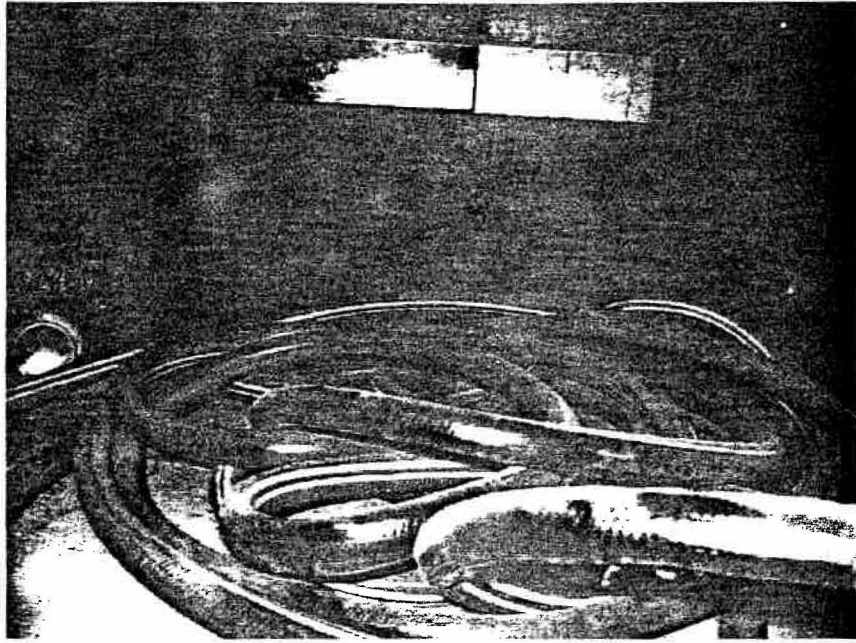


Photo 4.2.5-12
Below Louver - Junction Level Mechanical Room

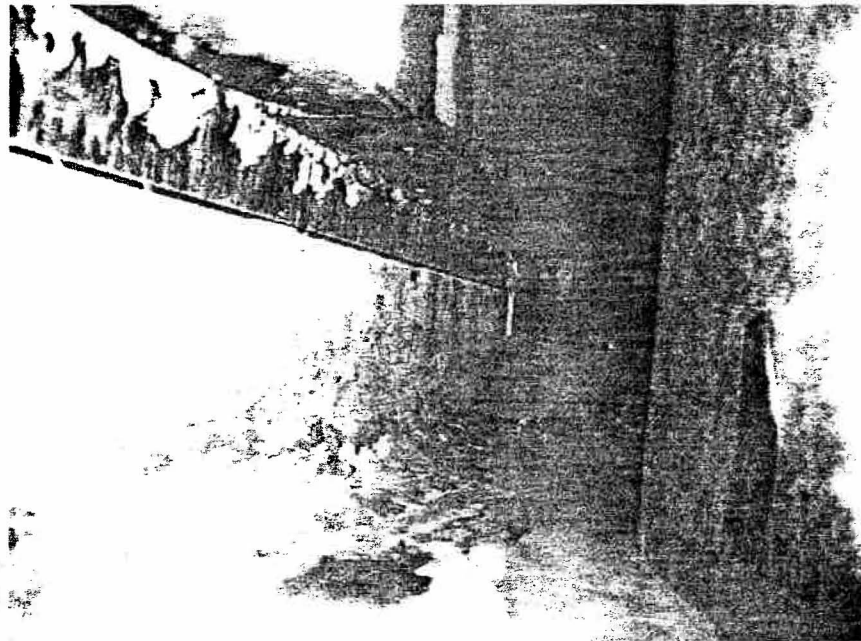


Photo 4.2.5-13
Below Louver - Junction Level Mechanical Room

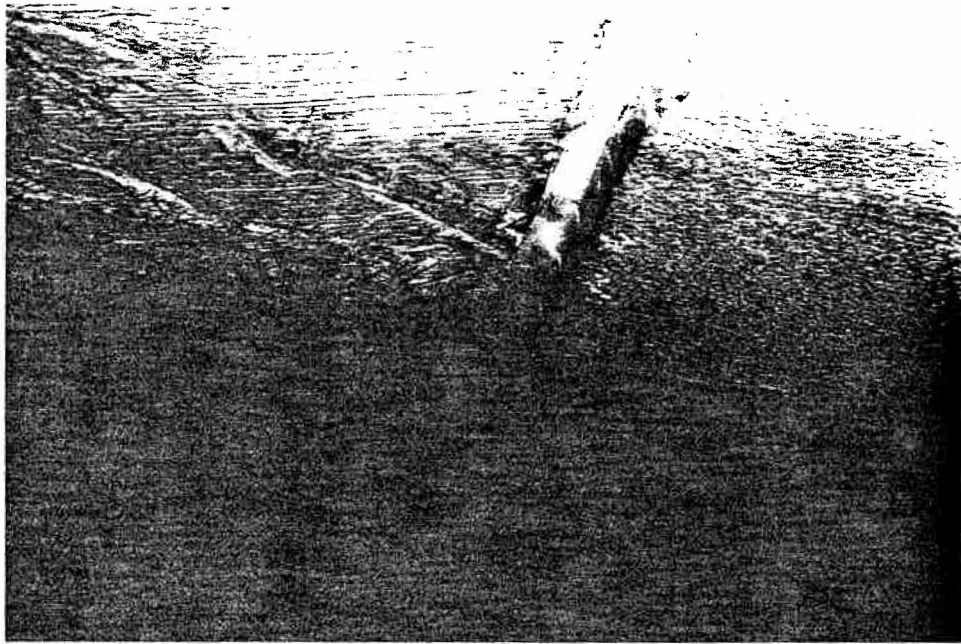


Photo 4.2.5-14
Above Soffit Louver – East Exterior Walkway at Junction Level

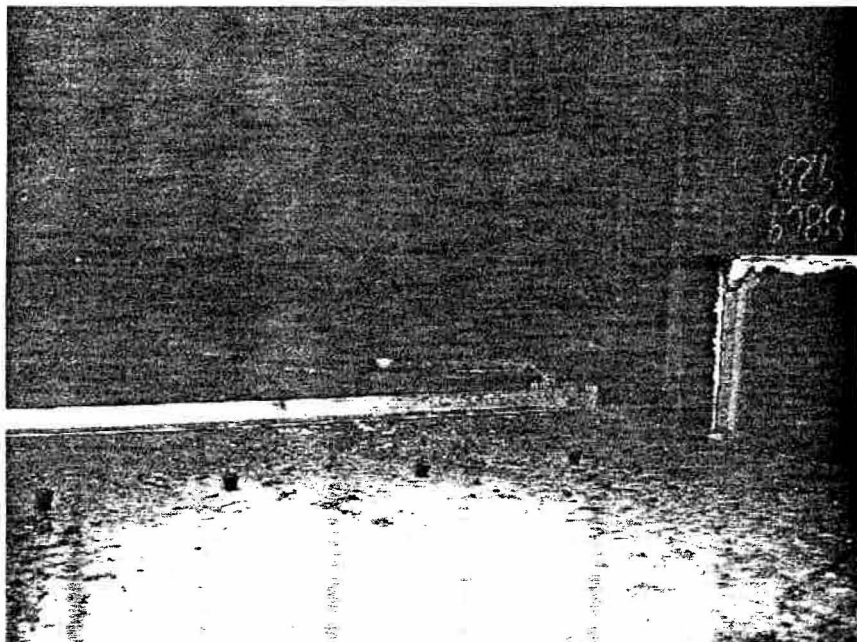


Photo 4.2.5-15
Above Soffit Louver – East Exterior Walkway at Junction Level

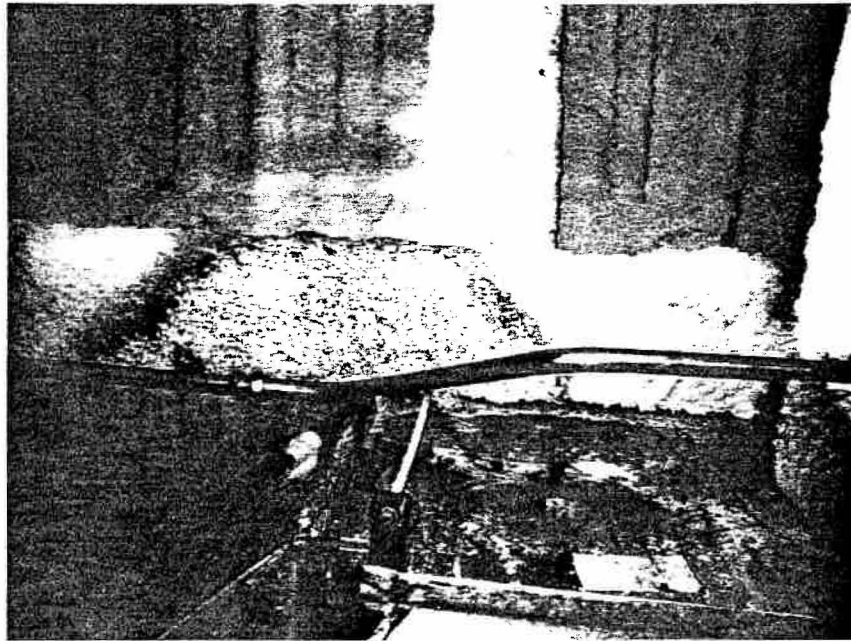


Photo 4.2.6-1
Structural Steel Above Mechanical Room at Sub-Junction Level

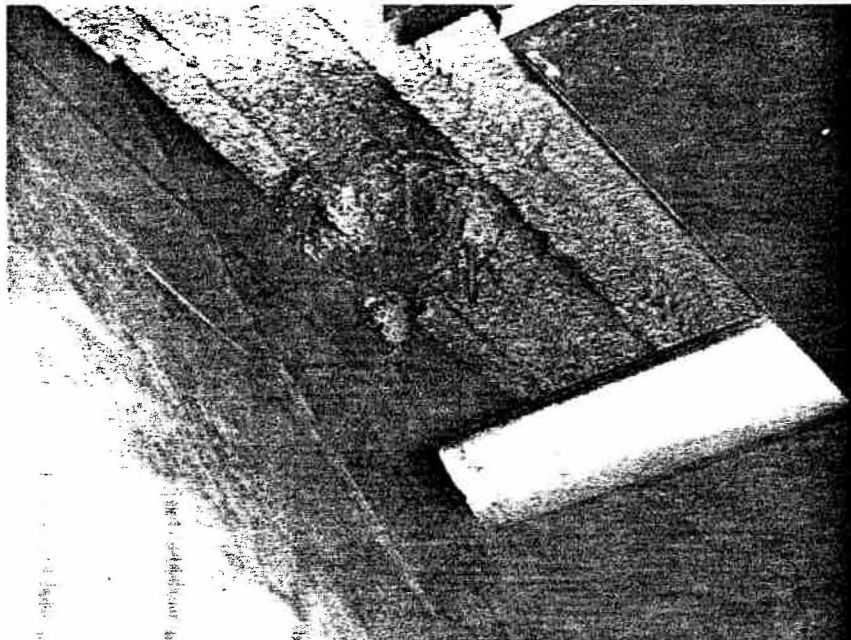


Photo 4.2.6-2
Bottom of Plugged Drain on Exterior Walkway at Junction Level

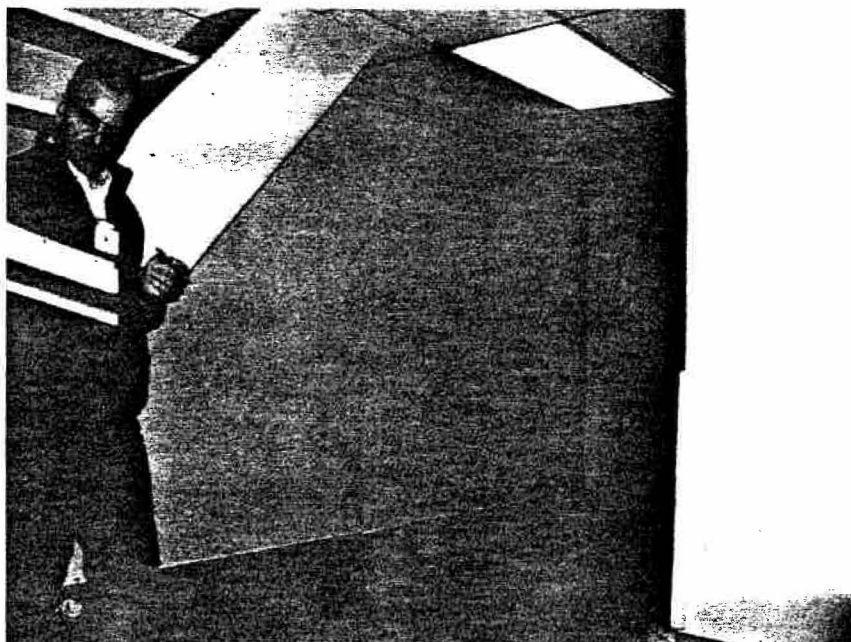


Photo 4.2.7-1
Room #1028 – Plywood Access Panel

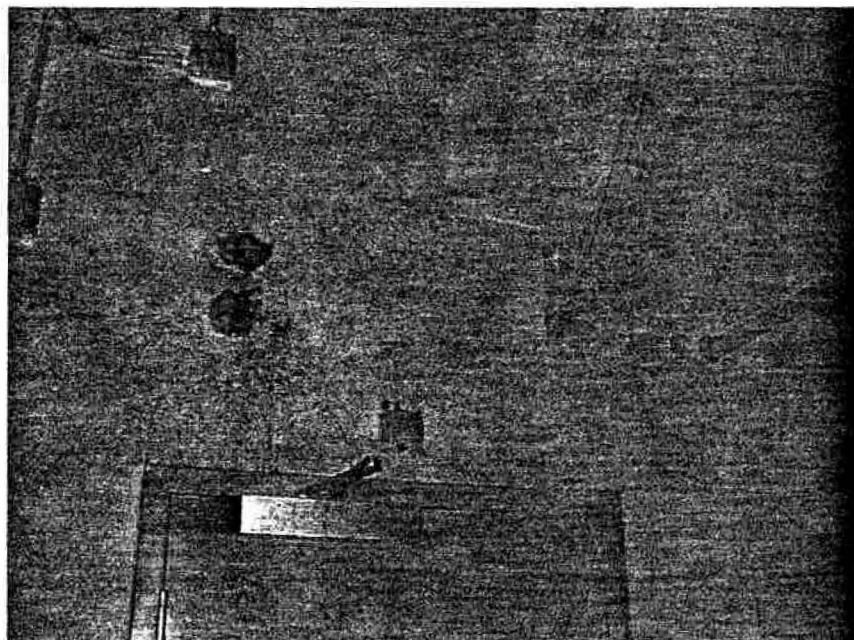


Photo 4.2.7-2
Door to Room #1027A

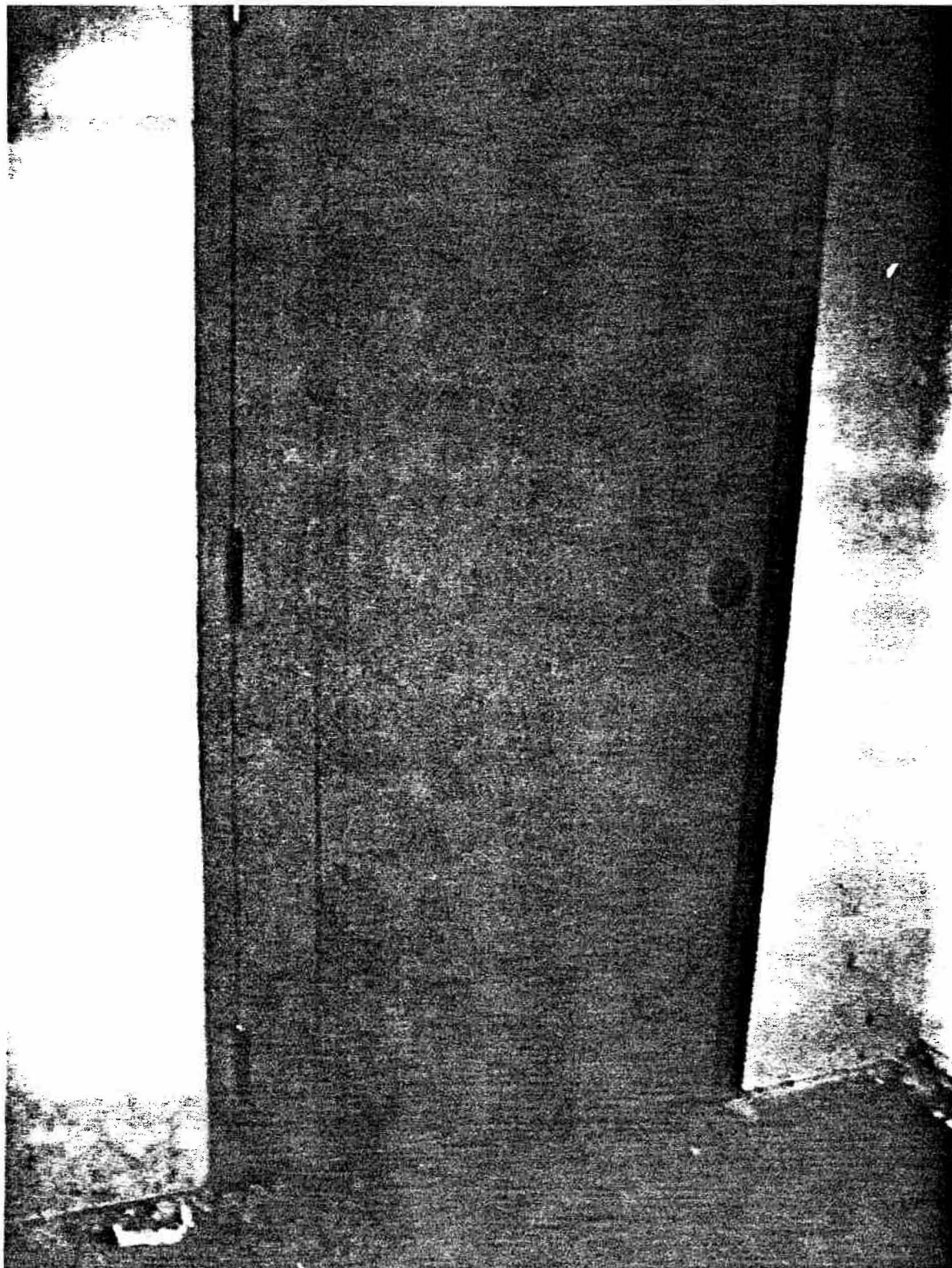


Photo 4.2.7-3
Door to Room #1027A

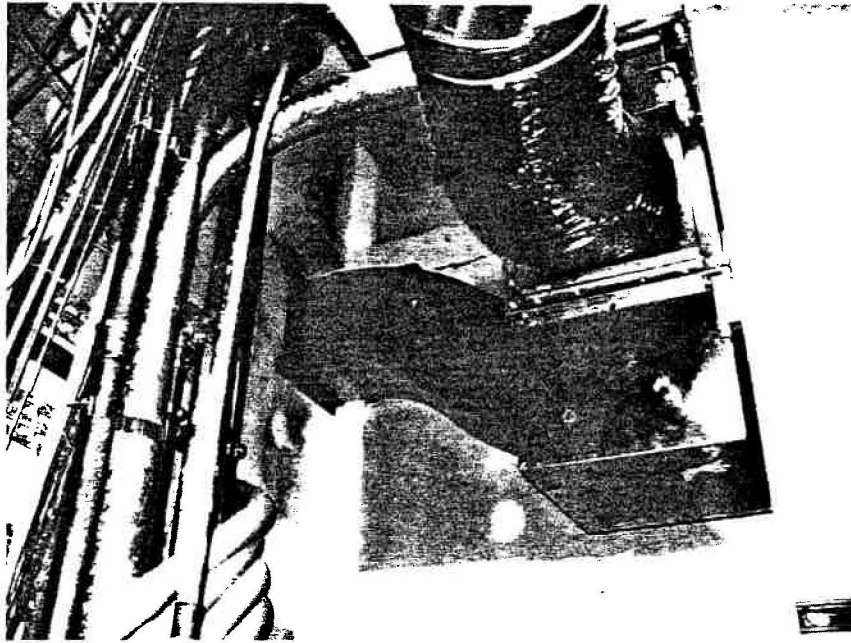


Photo 4.2.7-4
Exhaust Fan in Room 1027A for Room 1028

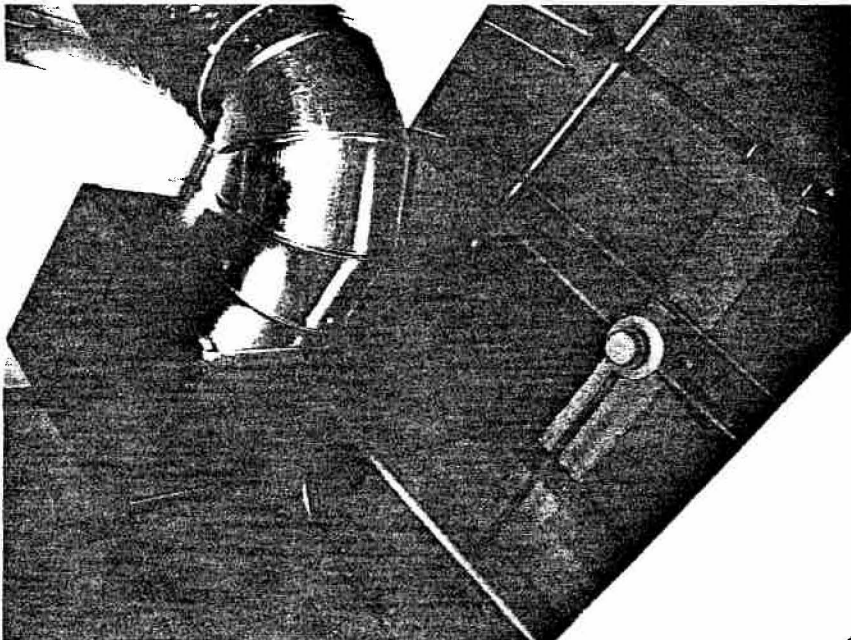


Photo 4.2.7-5
Exhaust Duct From Room 1028 Up Through the 11th Floor Slab

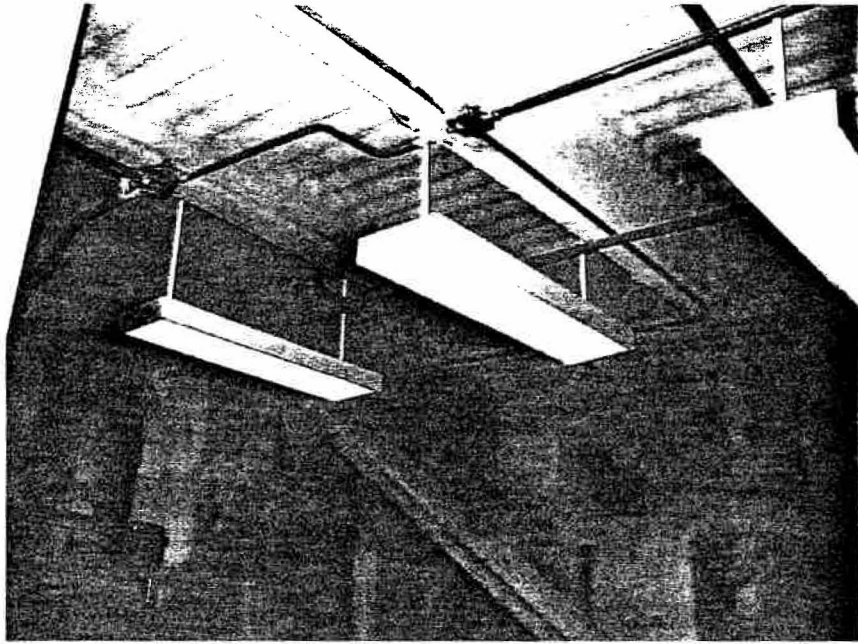


Photo 4.2.8-1
Ceiling in Room #928

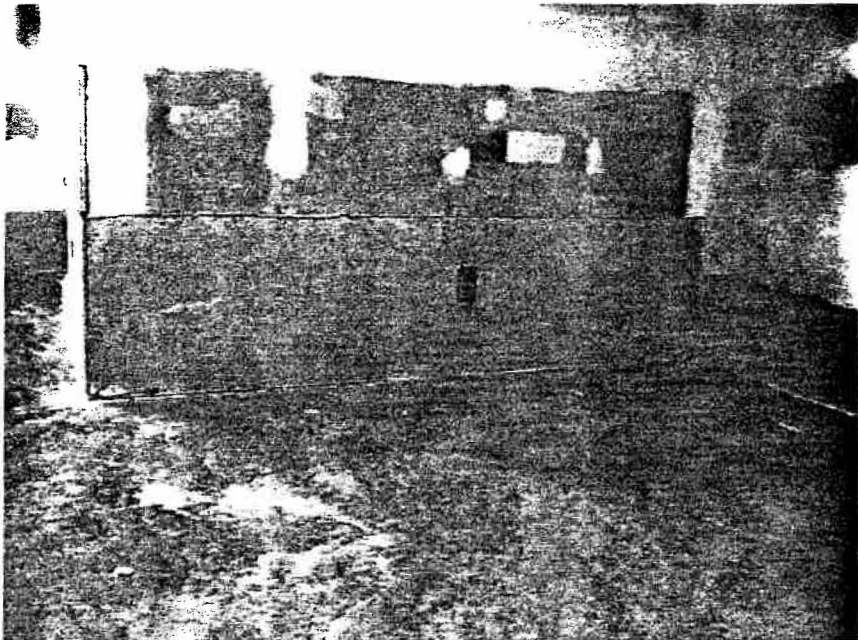


Photo 4.2.8-2
Room #928



Photo 4.2.8-3
Room #928



Photo 4.2.8-4
Electrical Equipment in Room #927A

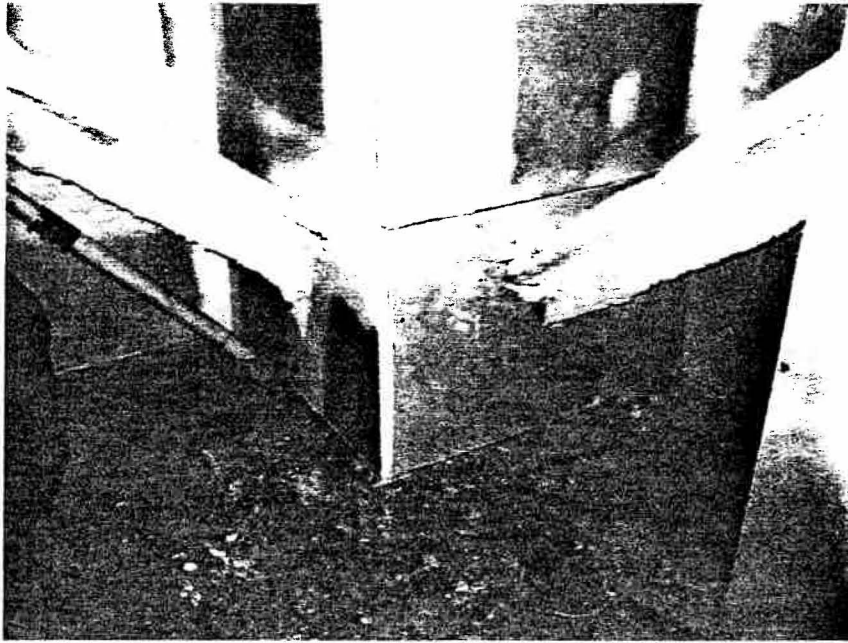


Photo 4.2.8-5
Room #927A

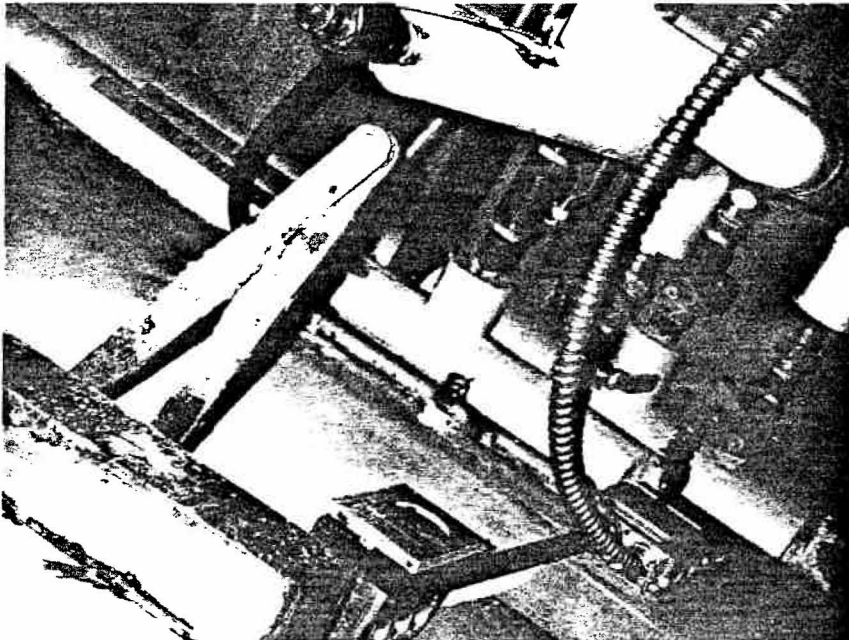


Photo 4.2.8-6
Room #927

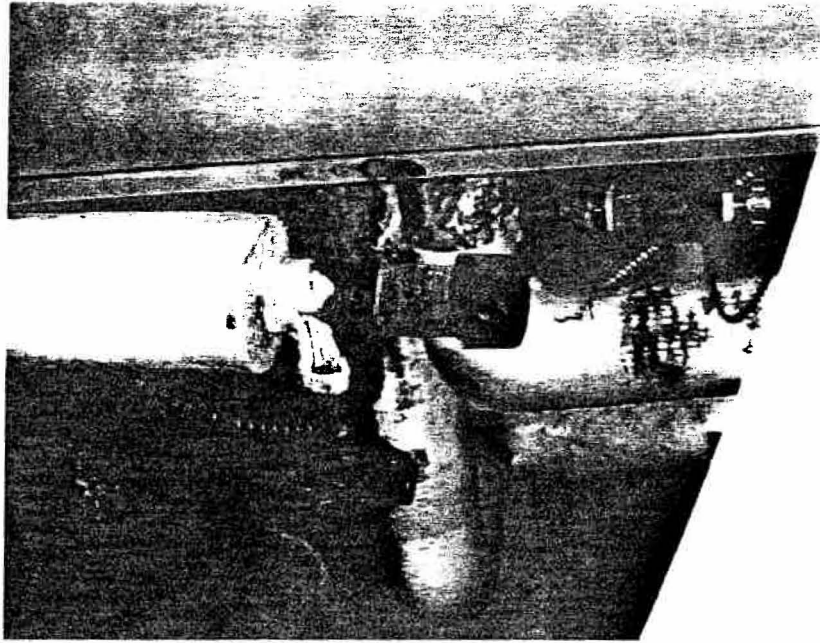


Photo 4.2.8-7
Room #927

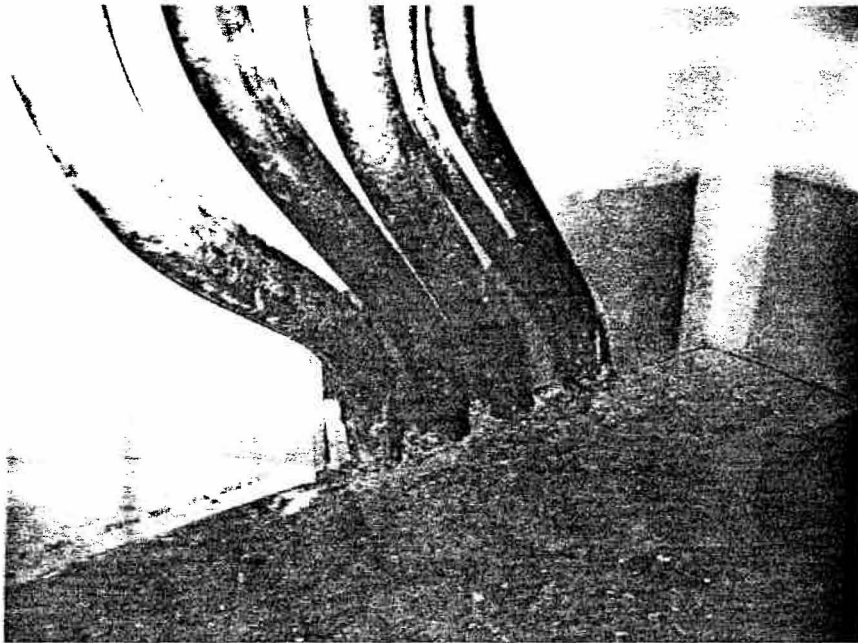


Photo 4.2.8-8
Room #927A - Wall Adjacent to Room 928



Photo 4.2.9-1
Door to Room 828 on Right – No Rated Wall above Beam Above Door



Photo 4.2.9-2
Exterior Wall in Room #828 – Moisture at Horizontal Joint

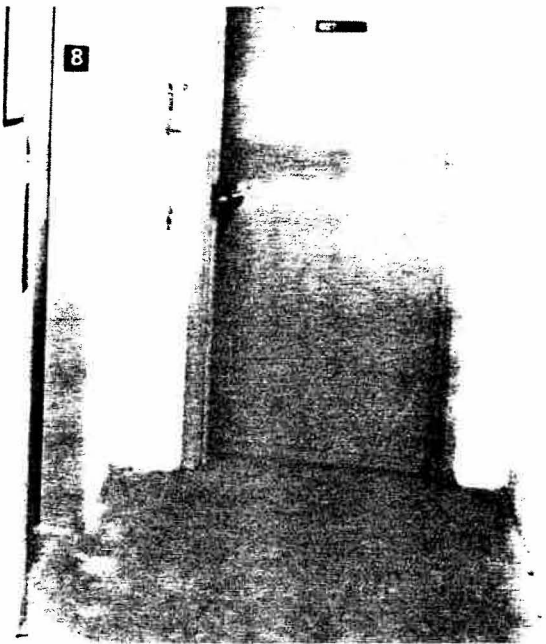


Photo 4.2.9-3
Moisture Stain at Bottom Left of Door 827

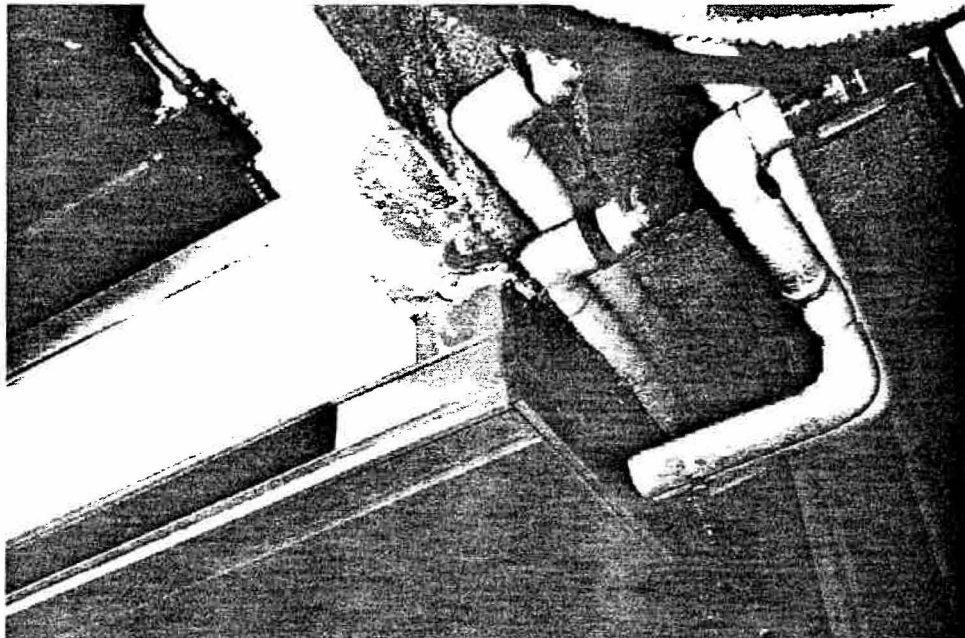


Photo 4.2.9-4
Moisture Stain on Beam in Room #827

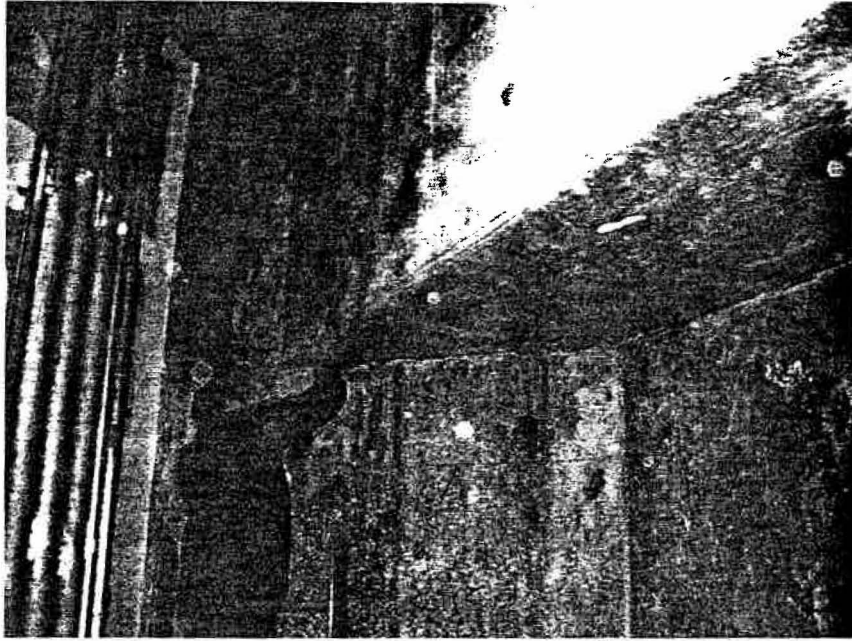


Photo 4.2.9-5
Room #828A

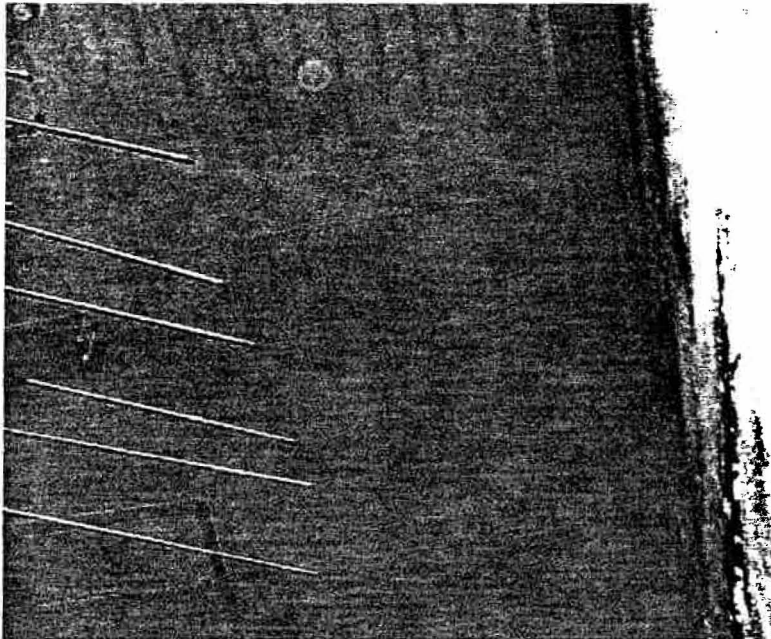


Photo 4.2.10-1
Ceiling/Floor Slab Above Room #728



Photo 4.2.12-1
Room #528

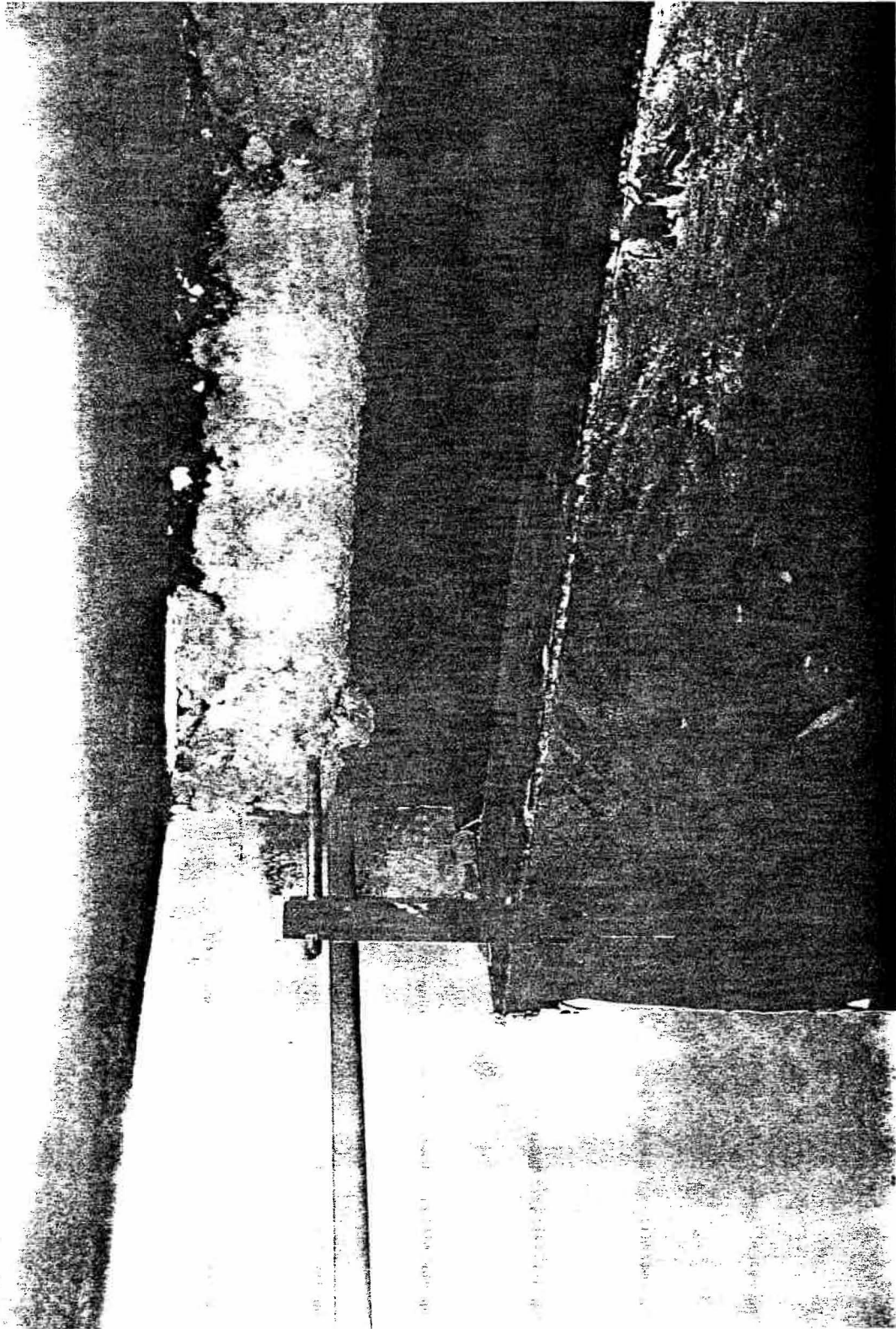


Photo 4.2.12-2
Wall Between Elevator Lobby and Room #527 – Note all Stops Top of Duct

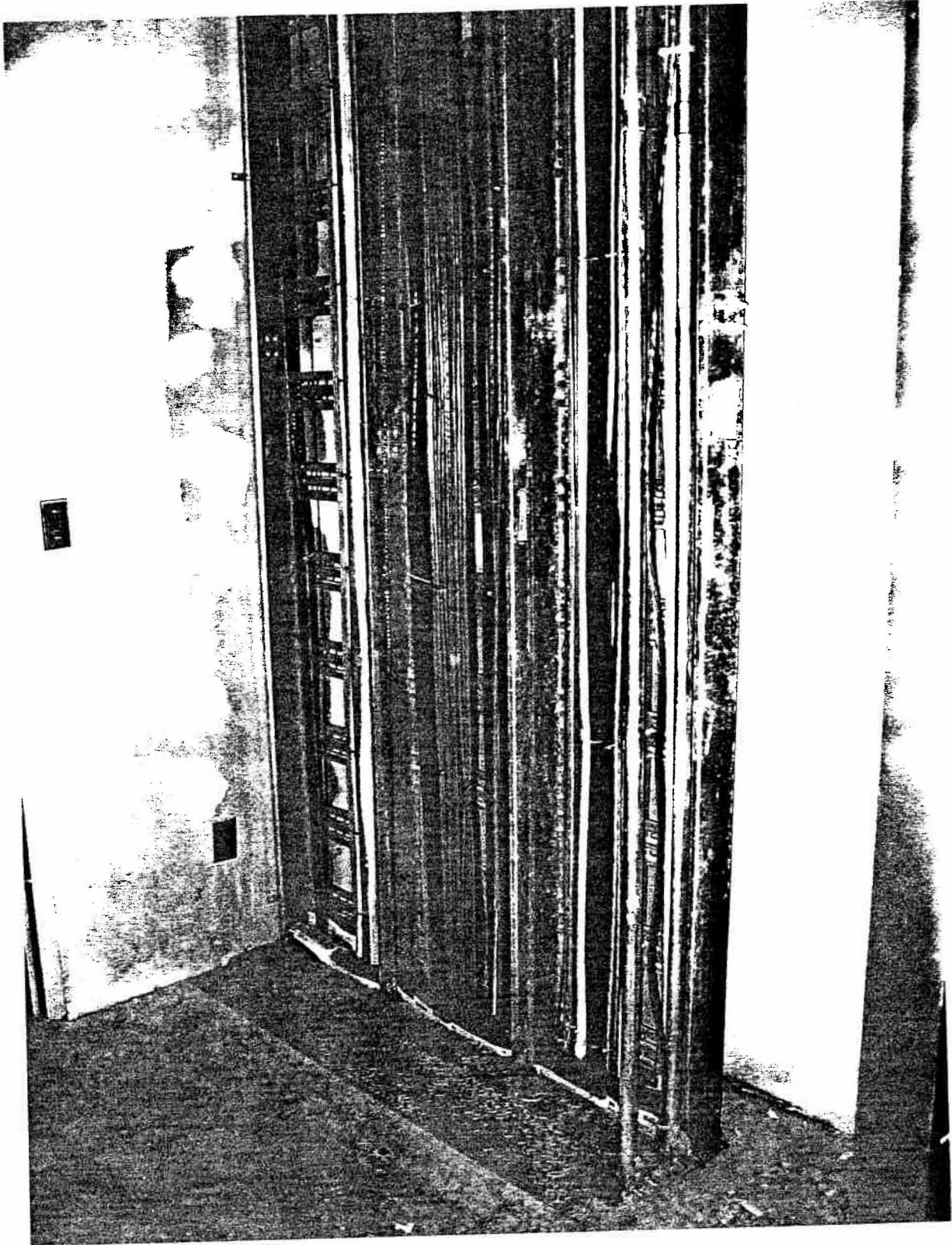


Photo 4.2.12-2
Room #527A – Stains at Bottom of Wall and Up Corner



Photo 4.2.13-1
Fourth Floor Elevator Vestibule – Uninsulated Access Door



Photo 4.2.13-2
Room #428 Exposed to Ductwork for Stairway Pressurization Intake

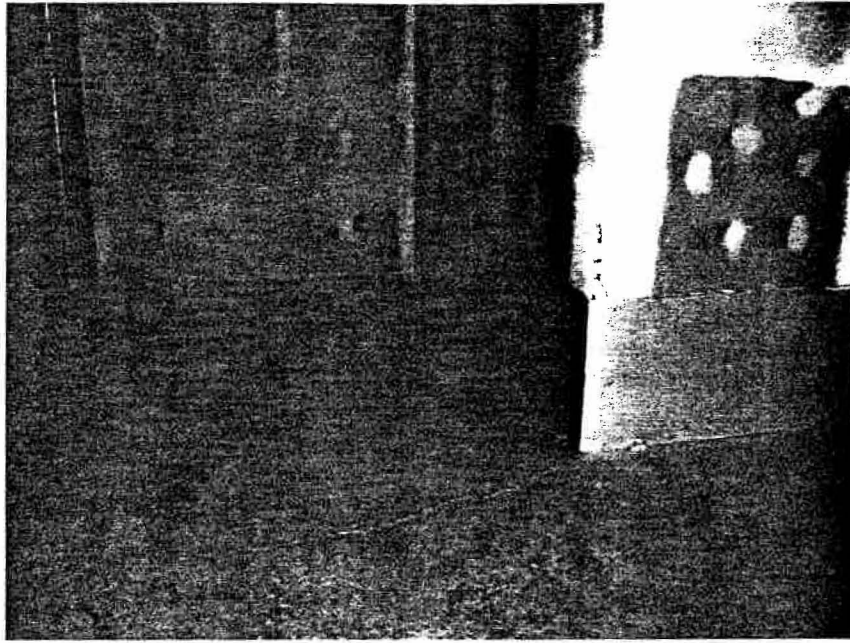


Photo 4.2.13-3
Room #428 – Replaced Gypsum Board

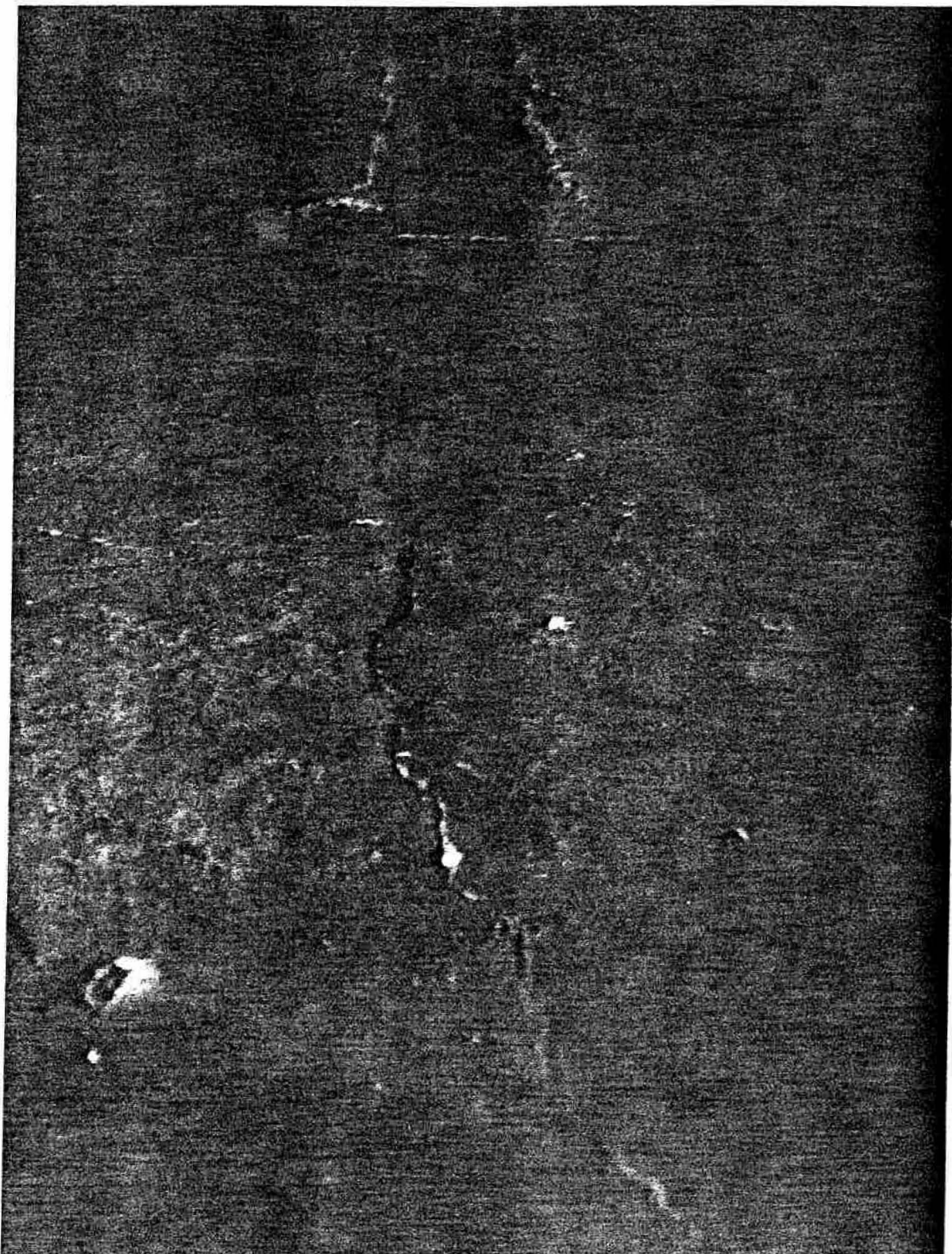


Photo 4.2.13-4
Room #428 – Cracked Floor Slab and Efflorescence on Exterior Wall

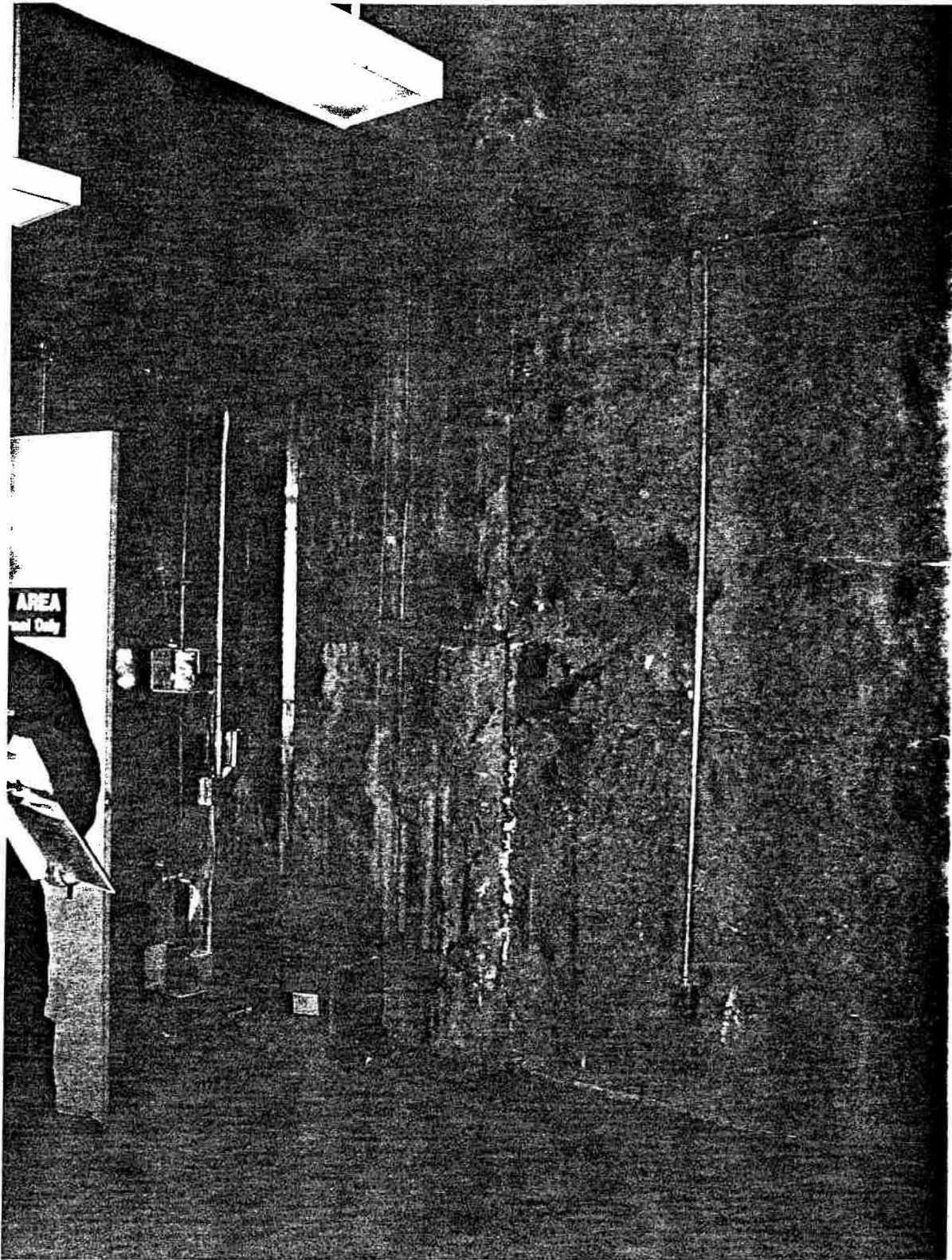


Photo 4.2.13-5
Room #428 – Stains at Joint Between and at Top of Structural Precast and Cast-In-Place Concrete

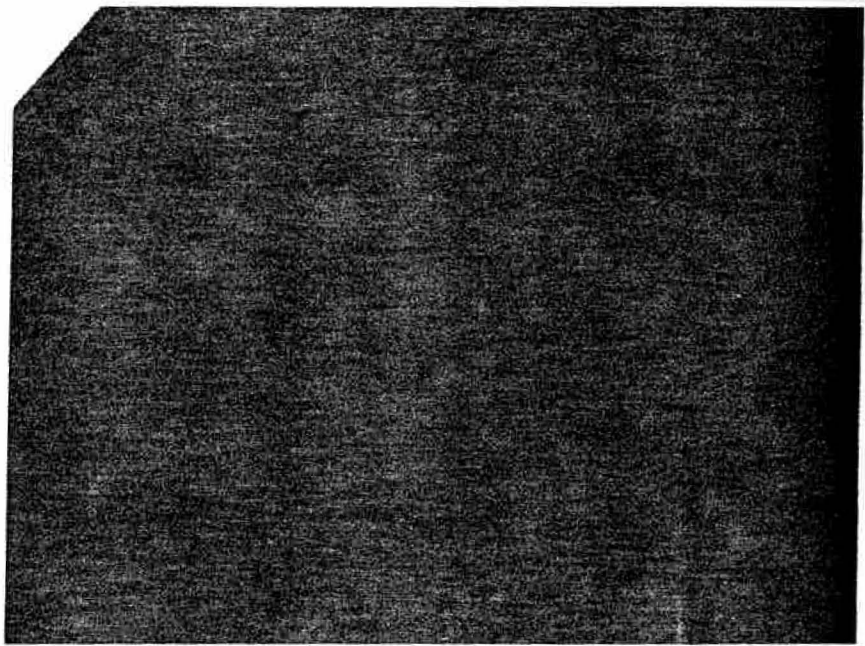


Photo 4.2.13-6
Room #428 – Stains at Floor Slab Above

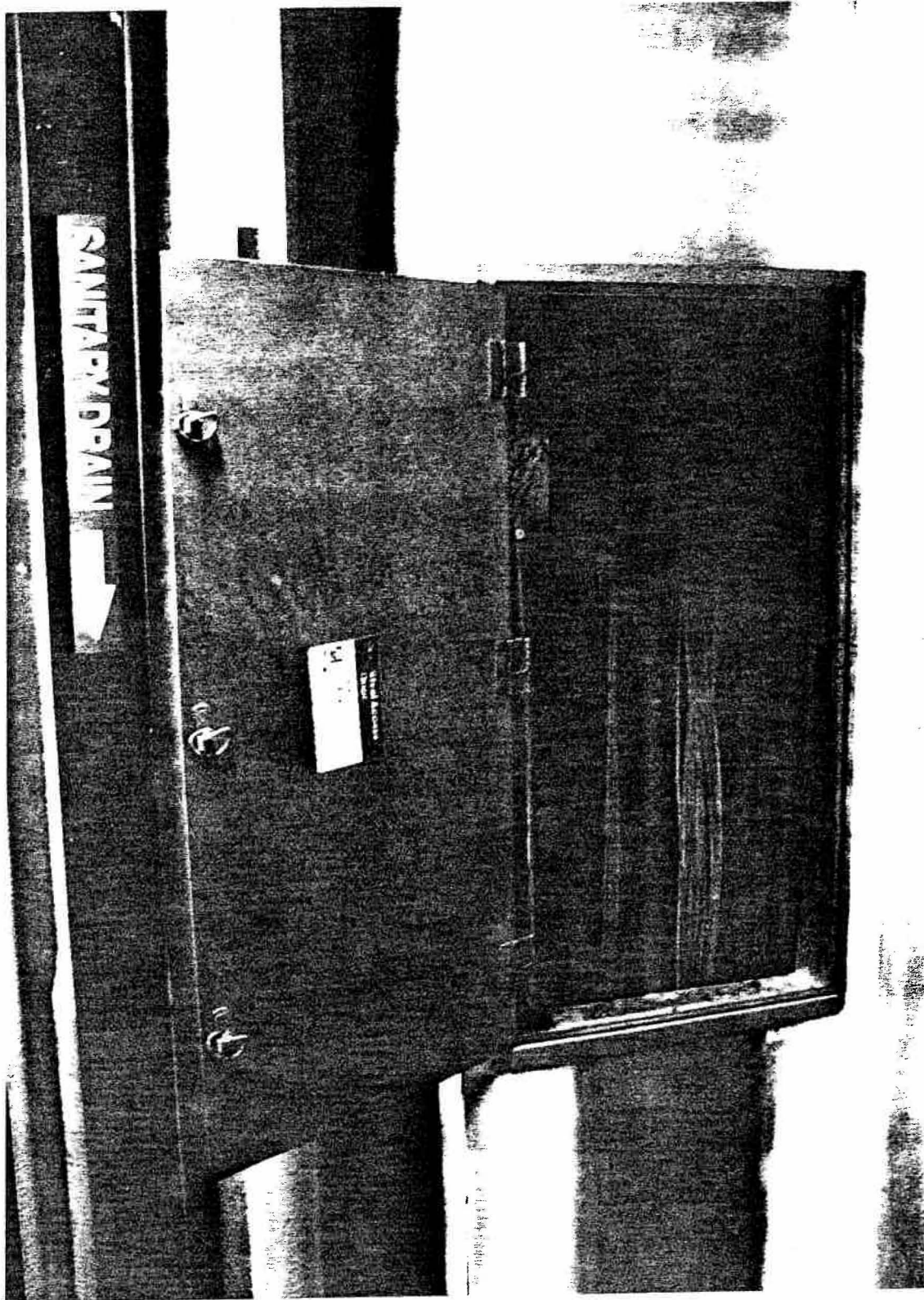


Photo 4.2.13-7
Room #427 - Non-Rated Access Door

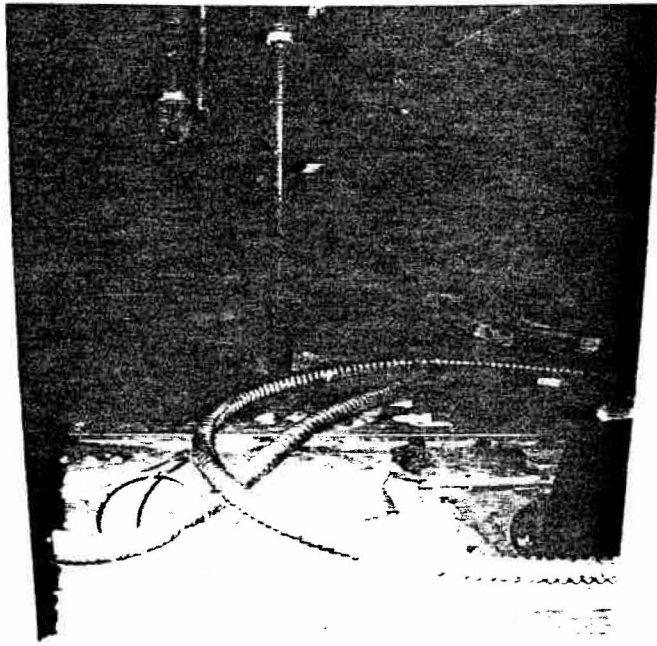


Photo 4.2 13-8
4th Floor Above Elevator Vestibule – Improperly Rated Penetrations

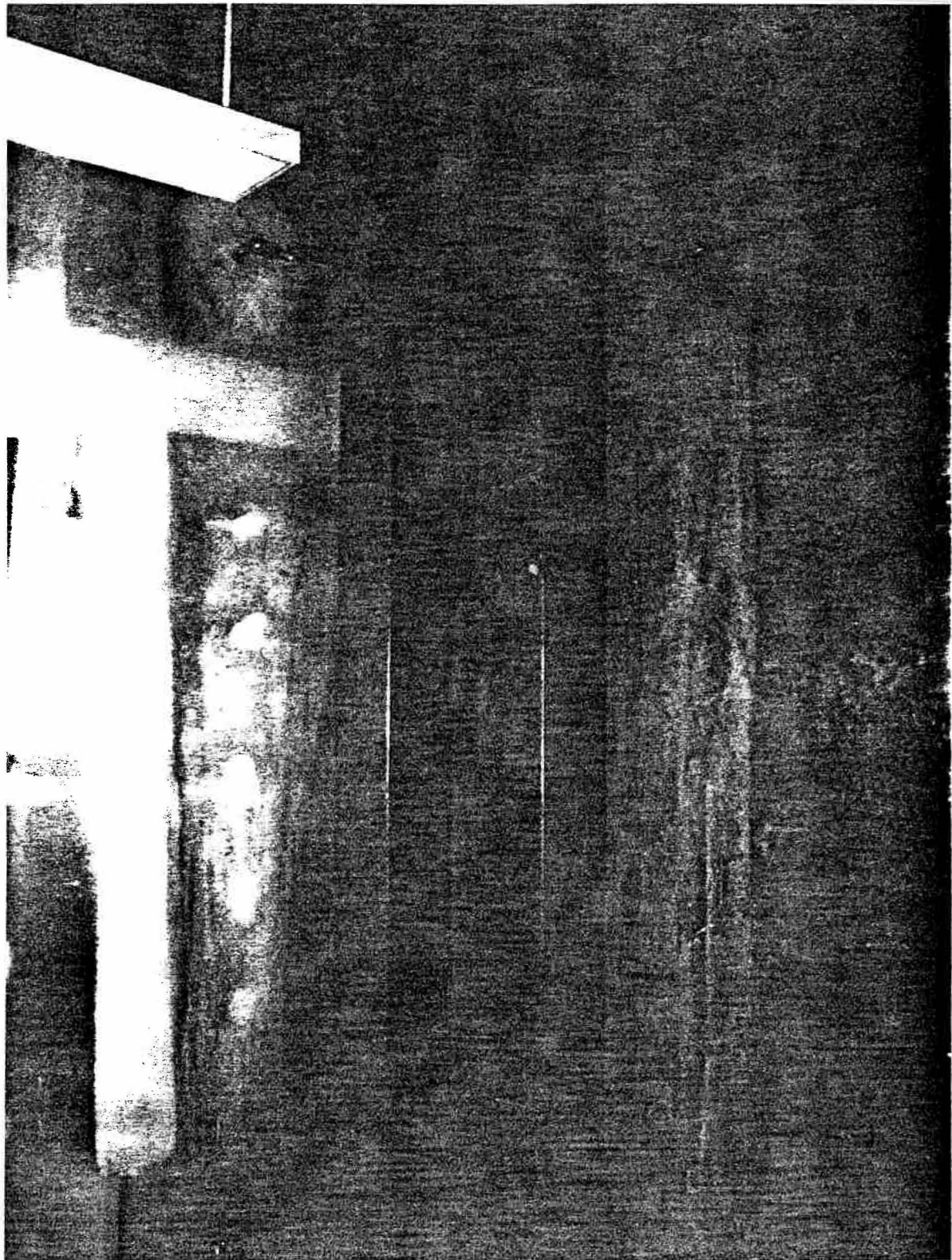


Photo 4.2.14-1
Room #328 – Ducts Without Fire Dampers

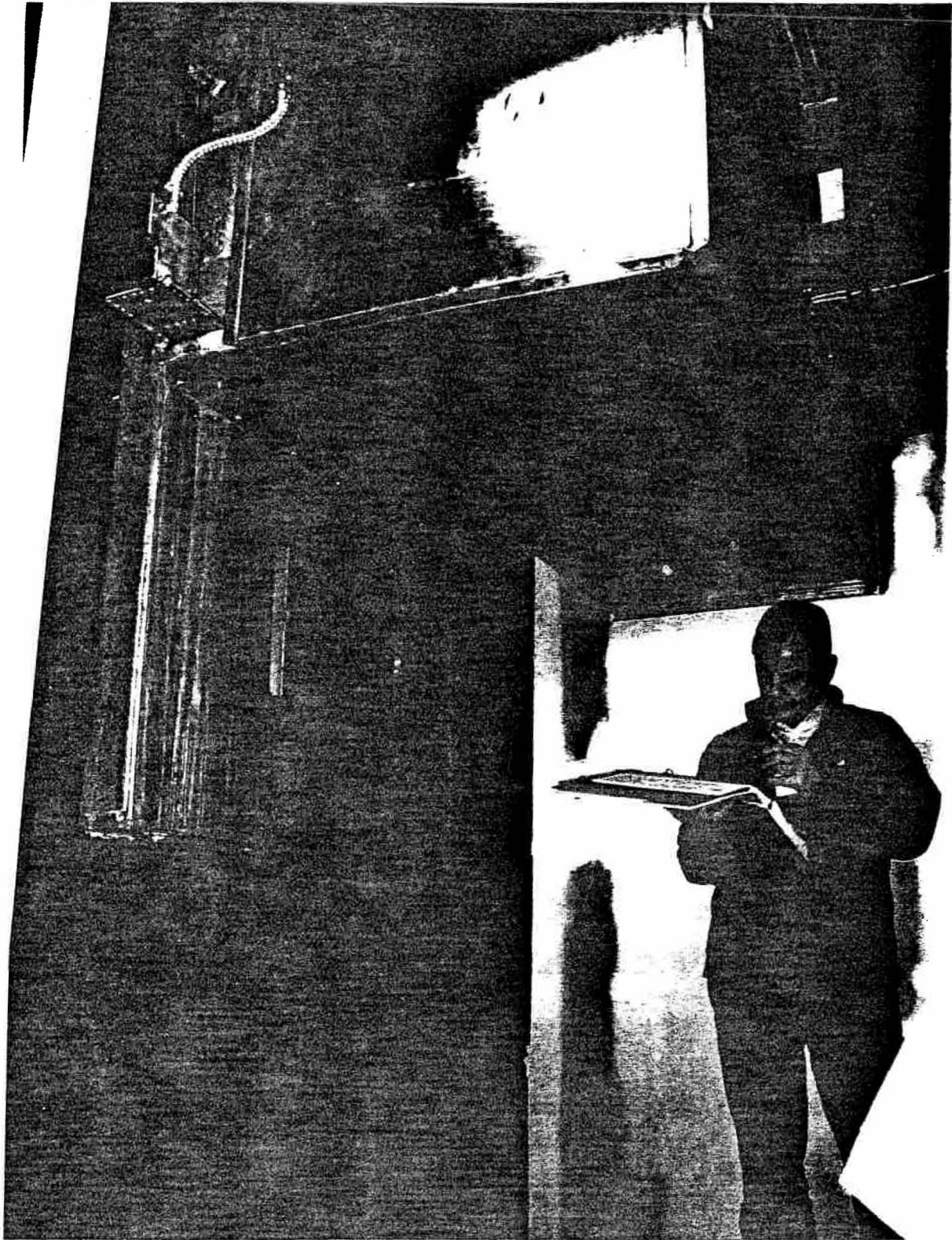


Photo 4.2.14-2
Room #327 – Stains on Blank-off Panel

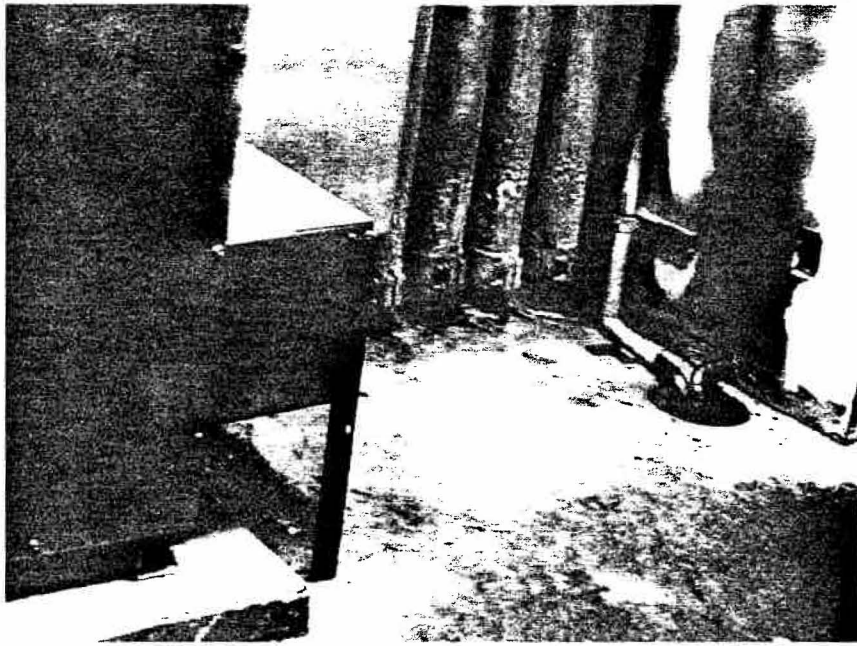


Photo 4.2.16-1
Room #127 – Floor Drain

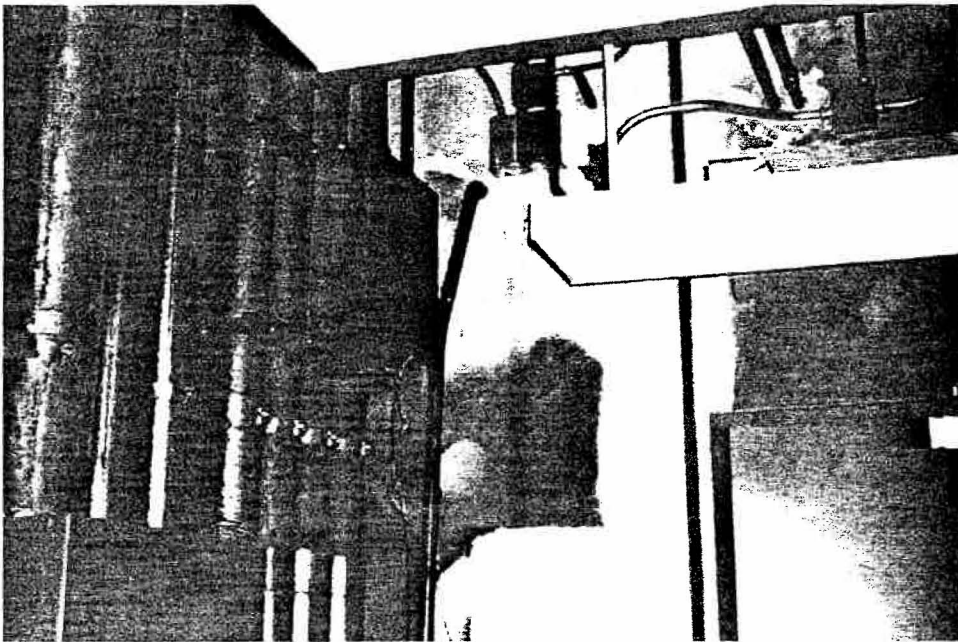


Photo 4.2.16-2
Room #127 – Water Stain on Wall

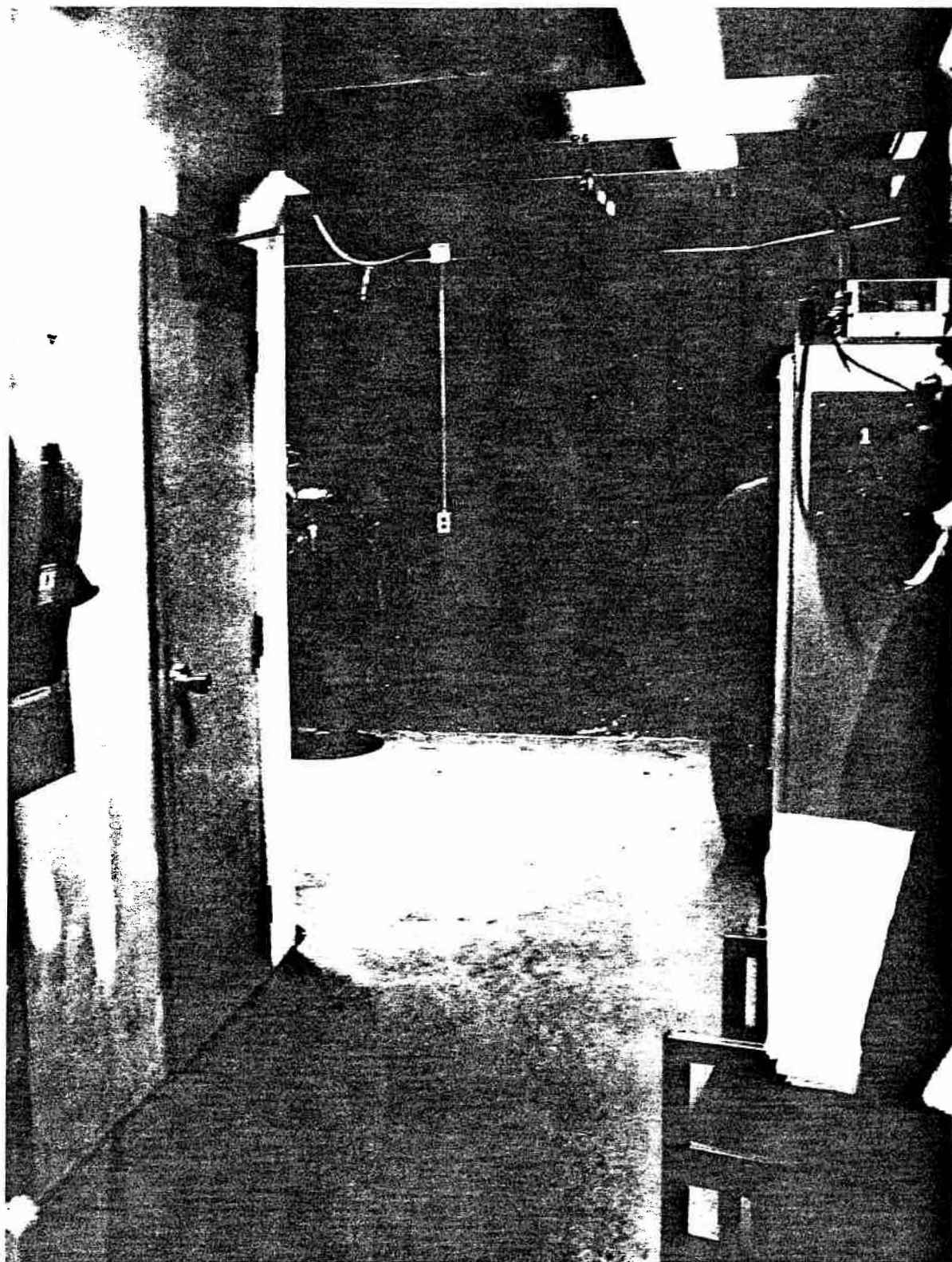


Photo 4.2.16-3
Room #127A – Elevator Machine Room

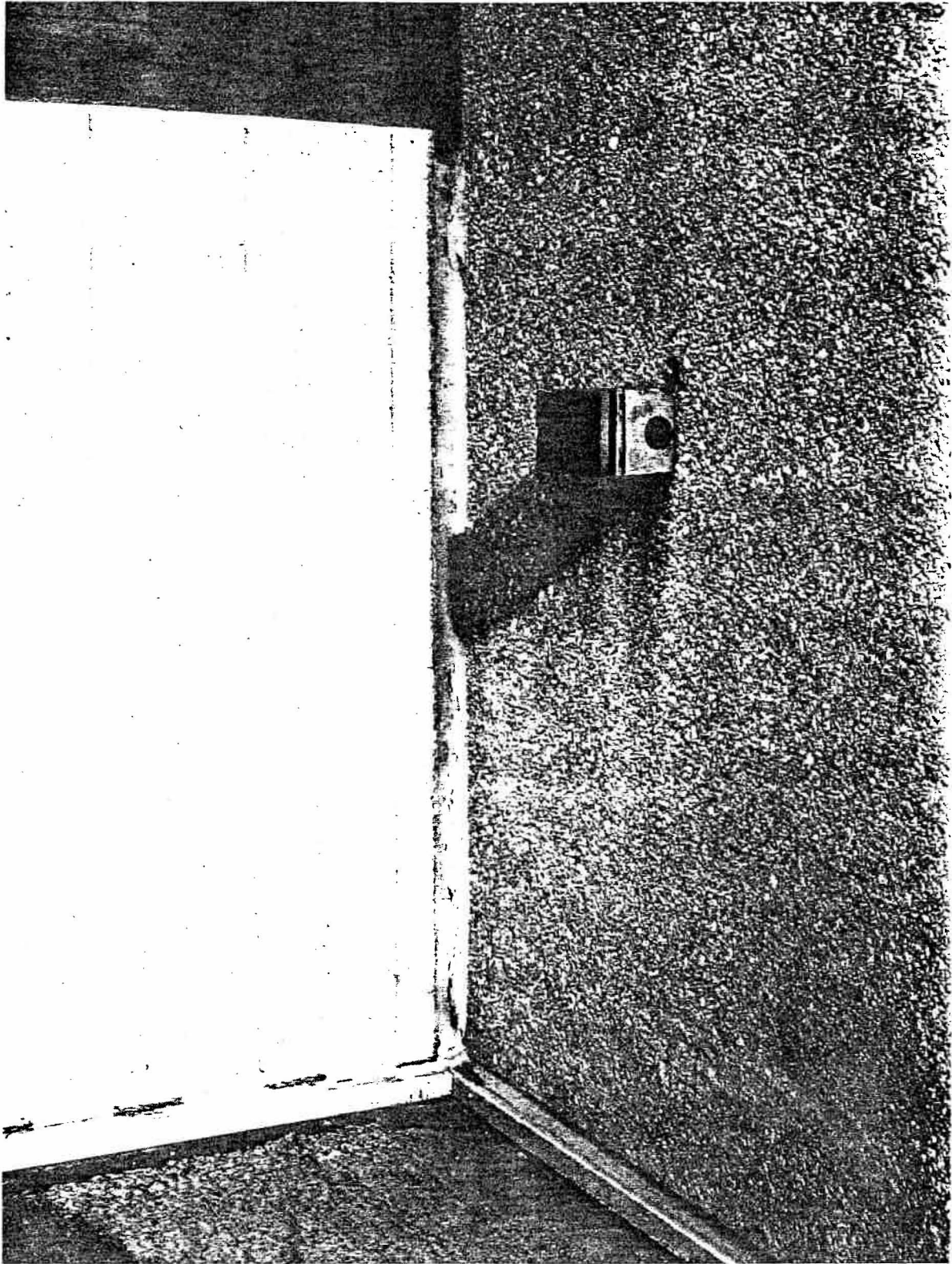


Photo 6.1.12-1
Wide Joint at Link/Base Building